



**DECEMBER
QUARTER 1993**

**TOURIST
ACCOMMODATION**

QUEENSLAND



TOURIST ACCOMMODATION, QUEENSLAND, DECEMBER QUARTER 1993

MAIN FEATURES

DECEMBER QUARTER 1993
COMPARED WITH
DECEMBER QUARTER 1992

HOTELS, MOTELS AND GUEST HOUSES

- Rooms available increased by 0.9 per cent from 39,781 to 40,125 and bed spaces increased by 0.9 per cent to 121,564.
- Room nights occupied increased by 9.8 per cent from 2,104,170 to 2,310,717.
- The room occupancy rate overall rose from 57.6 per cent to 62.6 per cent, with Cairns City and Gold Coast City recording 80.0 per cent and 76.0 per cent respectively. For five star rated establishments, the room occupancy rate overall was 78.0 per cent compared with 71.3 per cent for four star rated establishments and 62.3 per cent for three star rated establishments.
- Guest nights increased by 10.7 per cent from 3,901,419 to 4,317,962 and the bed occupancy rate increased from 35.3 per cent to 38.6 per cent.
- Guest arrivals increased by 12.1 per cent from 1,602,733 to 1,796,937 and the average length of stay remained unchanged at 2.4 days. For five star rated establishments, average length of stay decreased from 3.4 to 3.1 days.
- Takings from accommodation increased by 15.2 per cent from \$176.6m to \$203.4m while average takings per room night occupied increased from \$84 to \$88.

HOLIDAY FLATS, UNITS AND HOUSES

- The number of units, etc. available for short-term letting increased by 5.6 per cent from 15,726 to 16,608 while unit nights occupied increased by 5.8 per cent from 852,533 to 901,951.
- The unit occupancy rate increased marginally from 59.0 per cent to 59.1 per cent.
- Unit lettings increased by 7.9 per cent from 136,676 to 147,452 but average length of stay decreased from 6.2 days to 6.1 days.
- Accommodation takings increased by 13.3 per cent from \$47.7m to \$54.1m and the average takings per unit night occupied increased by 7.1 per cent from \$56 to \$60.

CARAVAN PARKS

- Caravan park capacity available increased by 0.8 per cent from 55,222 to 55,682 powered and unpowered sites and cabins, etc. while site nights occupied decreased by 0.5 per cent from 2,235,968 to 2,224,484.
- The site occupancy rate consequently decreased from 44.1 per cent to 43.4 per cent but takings from accommodation rose by 4.8 per cent from \$21.9m to \$22.9m.

VISITOR HOSTELS

- Bed spaces available were virtually unchanged at 7,863 while guest nights sold decreased by 4.2 per cent from 354,007 to 339,234.
- Consequently, the bed occupancy rate decreased from 49.0 per cent to 47.1 per cent.
- Accommodation takings were \$3.8m at an average of \$11 per guest night.

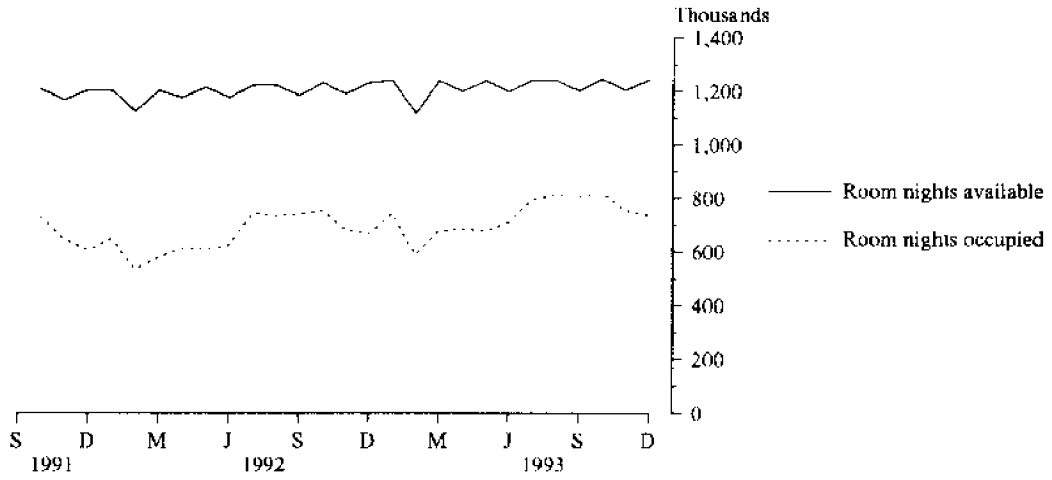
NOTES

From December quarter 1993, hotel, motel and guest house establishments with fewer than five rooms have been formally excluded from the scope of this statistical collection. This change in scope resulted in the exclusion of 21 establishments which in the September quarter 1993 Survey aggregates for Queensland represented 1.9 per cent of hotel, motel and guest house establishments but accounted for only 0.2 per cent of accommodation capacity and less than 0.1 percent of occupancy and takings.

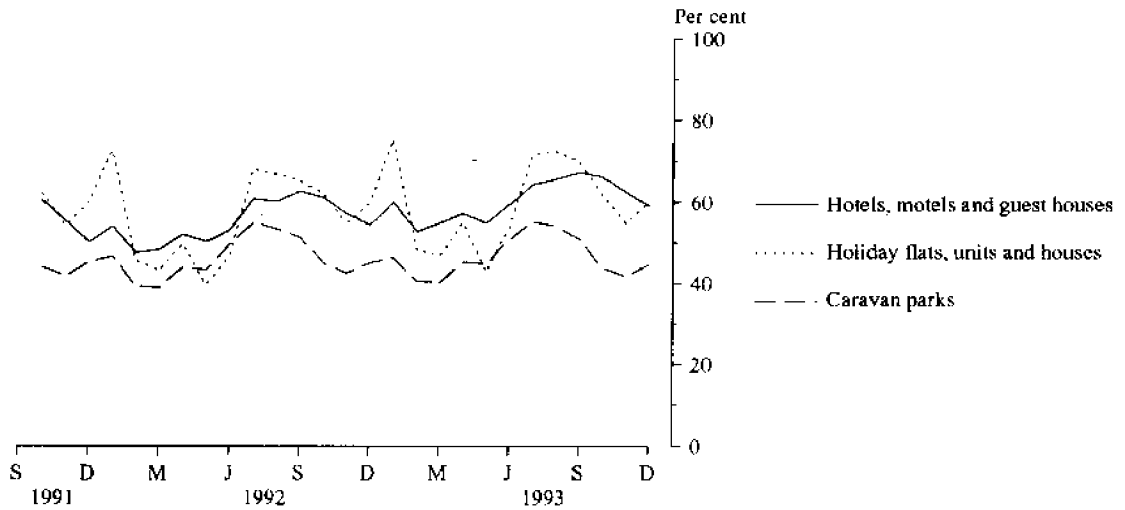
The format and content of tables in this publication have been revised in this issue. See page 3 for 'Contents'.

- INQUIRIES
- *for further information about statistics in this publication and the availability of related unpublished statistics, contact Sally Barrett on 008 077285 or any ABS office.*
 - *for information about other ABS statistics and services, refer to the back page of this publication.*

**MONTHLY ROOM NIGHTS AVAILABLE AND OCCUPIED:
HOTELS, MOTELS AND GUEST HOUSES,
QUEENSLAND**



**MONTHLY OCCUPANCY RATES,
QUEENSLAND**



**MONTHLY TAKINGS FROM ACCOMMODATION,
QUEENSLAND**



CONTENTS

| <i>Table</i> | <i>Page</i> |
|--|-------------|
| .. Main features | 1 |
| .. Diagrams | 2 |
| 1 Summary of hotels, motels and guest houses with facilities, Queensland | 4 |
| 2 Summary of caravan parks, Queensland | 5 |
| 3 Summary of holiday flats, units and houses, Queensland | 6 |
| 4 Summary of visitor hostels, Queensland | 6 |
| 5 Hotels, motels and guest houses with facilities by star grading, Queensland | 7 |
| 6 Hotels, motels and guest houses with facilities by statistical division, Queensland | 8 |
| 7 Hotels, motels and guest houses with facilities: Statistical divisions and selected subdivisions and statistical local areas, Queensland | 12 |
| 8 Holiday flats, units and houses by statistical division, Queensland | 16 |
| 9 Holiday flats, units and houses: Statistical divisions and selected subdivisions and statistical local areas, Queensland | 18 |
| 10 Caravan parks by statistical division, Queensland | 20 |
| 11 Caravan parks: Statistical divisions and selected subdivisions and statistical local areas, Queensland | 24 |
| 12 Visitor hostels by statistical division, Queensland | 28 |
| .. Explanatory Notes | 29 |
| .. Time series statistics available | 32 |
| .. Reference maps – statistical divisions and subdivisions of Queensland | 34 |

TABLE 1 — SUMMARY OF HOTELS, MOTELS AND GUEST HOUSES WITH FACILITIES, QUEENSLAND

| Particulars | Unit | Quarter ended | | | | Year ended | | | |
|---|----------|----------------|---------------|------------|-----------|----------------|---------------|---------------|---------------|
| | | September 1992 | December 1992 | March 1993 | June 1993 | September 1993 | December 1993 | December 1992 | December 1993 |
| LICENSED HOTELS WITH FACILITIES | | | | | | | | | |
| Establishments | No. | 279 | 281 | 281 | 279 | 276 | 262 | .. | .. |
| Guest rooms | No. | 17,457 | 17,670 | 17,845 | 17,929 | 17,968 | 17,917 | .. | .. |
| Bed spaces | No. | 52,230 | 51,768 | 52,691 | 53,158 | 53,271 | 53,013 | .. | .. |
| Employment (persons) | No. | 18,952 | 20,101 | 19,163 | 18,835 | 20,346 | 21,104 | .. | .. |
| Room nights occupied | No. | 954,924 | 980,061 | 944,074 | 941,762 | 1,066,265 | 1,122,871 | 3,503,990 | 4,074,972 |
| Room occupancy rate | per cent | 59.5 | 60.6 | 58.8 | 57.7 | 64.5 | 68.1 | 55.3 | 62.3 |
| Guest nights | No. | 1,750,475 | 1,818,636 | 1,727,797 | 1,697,025 | 1,967,630 | 2,086,779 | 6,370,136 | 7,479,231 |
| Bed occupancy rate | per cent | 36.4 | 38.5 | 36.4 | 35.1 | 40.1 | 42.8 | 33.9 | 38.6 |
| Guest arrivals | No. | 661,024 | 615,969 | 577,510 | 581,526 | 649,671 | 730,049 | 2,269,891 | 2,538,756 |
| Average length of stay | days | 2.6 | 3.0 | 3.0 | 2.9 | 3.0 | 2.9 | 2.8 | 2.9 |
| Takings from accommodation | \$'000 | 100,722 | 108,343 | 102,137 | 100,195 | 113,608 | 129,142 | 378,126 | 445,082 |
| MOTELS AND GUEST HOUSES WITH FACILITIES | | | | | | | | | |
| Establishments | No. | 828 | 833 | 840 | 842 | 840 | 836 | .. | .. |
| Guest rooms | No. | 21,923 | 22,111 | 22,090 | 22,036 | 22,056 | 22,208 | .. | .. |
| Bed spaces | No. | 67,771 | 68,722 | 68,641 | 68,245 | 68,210 | 68,551 | .. | .. |
| Employment (persons) | No. | 8,041 | 8,241 | 8,051 | 8,288 | 8,373 | 8,417 | .. | .. |
| Room nights occupied | No. | 1,262,645 | 1,124,109 | 1,069,239 | 1,134,132 | 1,353,128 | 1,187,846 | 4,433,312 | 4,744,345 |
| Room occupancy rate | per cent | 62.6 | 55.3 | 53.8 | 56.6 | 66.8 | 58.2 | 55.2 | 58.9 |
| Guest nights | No. | 2,360,300 | 2,082,783 | 2,032,846 | 2,102,229 | 2,557,788 | 2,231,183 | 8,236,063 | 8,924,046 |
| Bed occupancy rate | per cent | 37.9 | 32.9 | 32.9 | 33.9 | 40.8 | 35.4 | 33.2 | 35.8 |
| Guest arrivals | No. | 1,127,823 | 986,764 | 928,996 | 1,037,764 | 1,238,728 | 1,066,888 | 3,944,430 | 4,272,376 |
| Average length of stay | days | 2.1 | 2.1 | 2.2 | 2.0 | 2.1 | 2.1 | 2.1 | 2.1 |
| Takings from accommodation | \$'000 | 73,712 | 68,229 | 64,910 | 67,136 | 81,890 | 74,229 | 260,190 | 288,165 |
| TOTAL HOTELS, MOTELS AND GUEST HOUSES WITH FACILITIES | | | | | | | | | |
| Establishments | No. | 1,107 | 1,114 | 1,121 | 1,121 | 1,116 | 1,098 | .. | .. |
| Guest rooms | No. | 39,380 | 39,781 | 39,935 | 39,965 | 40,024 | 40,125 | .. | .. |
| Bed spaces | No. | 120,001 | 120,490 | 121,332 | 121,403 | 121,481 | 121,564 | .. | .. |
| Employment (persons) | No. | 26,993 | 28,342 | 27,214 | 27,123 | 28,719 | 29,521 | .. | .. |
| Room nights occupied | No. | 2,217,569 | 2,104,170 | 2,013,313 | 2,075,894 | 2,419,393 | 2,310,717 | 7,937,302 | 8,819,317 |
| Room occupancy rate | per cent | 61.2 | 57.6 | 56.0 | 57.1 | 65.7 | 62.6 | 55.3 | 60.4 |
| Guest nights | No. | 4,110,775 | 3,901,419 | 3,760,643 | 3,799,254 | 4,525,418 | 4,317,962 | 14,606,199 | 16,403,277 |
| Bed occupancy rate | per cent | 37.2 | 35.3 | 34.4 | 34.4 | 40.5 | 38.6 | 33.5 | 37.0 |
| Guest arrivals | No. | 1,788,847 | 1,602,733 | 1,506,506 | 1,619,290 | 1,888,399 | 1,796,937 | 6,214,321 | 6,811,132 |
| Average length of stay | days | 2.3 | 2.4 | 2.5 | 2.3 | 2.4 | 2.4 | 2.4 | 2.4 |
| Takings from accommodation | \$'000 | 174,435 | 176,572 | 167,047 | 167,331 | 195,498 | 203,370 | 638,316 | 733,247 |

TABLE 2 — SUMMARY OF CARAVAN PARKS, QUEENSLAND

| Particulars | Unit | Quarter ended | | | | | | Year ended | |
|--------------------------------------|------------|----------------|---------------|---------------|---------------|----------------|---------------|---------------|---------------|
| | | September 1992 | December 1992 | March 1993 | June 1993 | September 1993 | December 1993 | December 1992 | December 1993 |
| SHORT-TERM CARAVAN PARKS | | | | | | | | | |
| Establishments | No. | 236 | 226 | 225 | 226 | 226 | 231 | .. | .. |
| Capacity | | | | | | | | | |
| On-site vans | No. | 1,321 | 1,157 | 1,132 | 1,128 | 1,094 | 1,080 | .. | .. |
| Other powered sites | No. | 11,149 | 10,631 | 10,567 | 10,636 | 10,623 | 10,792 | .. | .. |
| Unpowered sites | No. | 8,587 | 8,492 | 8,492 | 8,478 | 8,304 | 8,390 | .. | .. |
| Cabins, etc. | No. | 1,230 | 1,083 | 1,116 | 1,158 | 1,204 | 1,207 | .. | .. |
| <i>Total capacity</i> | <i>No.</i> | <i>22,287</i> | <i>21,363</i> | <i>21,307</i> | <i>21,400</i> | <i>21,225</i> | <i>21,469</i> | .. | .. |
| Sites occupied by long-term guests | No. | 2,064 | 1,795 | 1,819 | 1,897 | 1,789 | 1,752 | .. | .. |
| Other sites permanently reserved (a) | No. | 615 | 515 | 546 | 611 | 691 | 684 | .. | .. |
| Employment (persons) | No. | 828 | 774 | 738 | 777 | 794 | 811 | .. | .. |
| Site nights occupied (a) | No. | 905,059 | 547,947 | 491,297 | 634,893 | 869,992 | 565,353 | (a) | 2,561,535 |
| Site occupancy rate (a) | per cent | 44.1 | 28.0 | 25.6 | 32.7 | 44.6 | 28.7 | (a) | 32.9 |
| Takings from accommodation | \$'000 | 10,197 | 6,230 | 5,734 | 7,485 | 10,295 | 6,953 | 30,538 | 30,467 |
| LONG-TERM CARAVAN PARKS | | | | | | | | | |
| Establishments | No. | 392 | 399 | 401 | 400 | 400 | 398 | .. | .. |
| Capacity | | | | | | | | | |
| On-site vans | No. | 4,528 | 4,613 | 4,586 | 4,604 | 4,736 | 4,728 | .. | .. |
| Other powered sites | No. | 21,339 | 21,817 | 21,924 | 21,866 | 21,991 | 21,835 | .. | .. |
| Unpowered sites | No. | 5,210 | 5,235 | 5,277 | 5,386 | 5,546 | 5,413 | .. | .. |
| Cabins, etc. | No. | 2,048 | 2,194 | 2,214 | 2,230 | 2,267 | 2,237 | .. | .. |
| <i>Total capacity</i> | <i>No.</i> | <i>33,125</i> | <i>33,859</i> | <i>34,001</i> | <i>34,086</i> | <i>34,540</i> | <i>34,213</i> | .. | .. |
| Sites occupied by long-term guests | No. | 15,305 | 14,870 | 15,119 | 15,148 | 15,348 | 14,687 | .. | .. |
| Other sites permanently reserved (a) | No. | 546 | 676 | 657 | 630 | 552 | 502 | .. | .. |
| Employment (persons) | No. | 1,335 | 1,428 | 1,434 | 1,412 | 1,392 | 1,372 | .. | .. |
| Site nights occupied (a) | No. | 1,811,305 | 1,688,021 | 1,617,077 | 1,730,416 | 1,870,442 | 1,659,131 | (a) | 6,877,066 |
| Site occupancy rate (a) | per cent | 59.4 | 54.2 | 52.8 | 55.8 | 58.9 | 52.7 | (a) | 55.1 |
| Takings from accommodation | \$'000 | 17,069 | 15,642 | 14,763 | 16,235 | 18,219 | 15,979 | 61,333 | 65,196 |
| TOTAL CARAVAN PARKS | | | | | | | | | |
| Establishments | No. | 628 | 625 | 626 | 626 | 626 | 629 | .. | .. |
| Capacity | | | | | | | | | |
| On-site vans | No. | 5,849 | 5,770 | 5,718 | 5,732 | 5,830 | 5,808 | .. | .. |
| Other powered sites | No. | 32,488 | 32,448 | 32,491 | 32,502 | 32,614 | 32,627 | .. | .. |
| Unpowered sites | No. | 13,797 | 13,727 | 13,769 | 13,864 | 13,850 | 13,803 | .. | .. |
| Cabins, etc. | No. | 3,278 | 3,277 | 3,330 | 3,388 | 3,471 | 3,444 | .. | .. |
| <i>Total capacity</i> | <i>No.</i> | <i>55,412</i> | <i>55,222</i> | <i>55,308</i> | <i>55,486</i> | <i>55,765</i> | <i>55,682</i> | .. | .. |
| Sites occupied by long-term guests | No. | 17,369 | 16,665 | 16,938 | 17,045 | 17,137 | 16,439 | .. | .. |
| Other sites permanently reserved (a) | No. | 1,161 | 1,191 | 1,203 | 1,241 | 1,243 | 1,186 | .. | .. |
| Employment (persons) | No. | 2,163 | 2,202 | 2,172 | 2,189 | 2,186 | 2,183 | .. | .. |
| Site nights occupied (a) | No. | 2,716,364 | 2,235,968 | 2,108,374 | 2,365,309 | 2,740,434 | 2,224,484 | (a) | 9,438,601 |
| Site occupancy rate (a) | per cent | 53.3 | 44.1 | 42.4 | 46.9 | 53.5 | 43.4 | (a) | 46.6 |
| Takings from accommodation | \$'000 | 27,265 | 21,873 | 20,497 | 23,720 | 28,515 | 22,931 | 91,872 | 95,663 |

(a) From September quarter 1992, caravan park sites, etc. permanently reserved but only casually occupied by their tenants have been recorded continuously as site nights occupied irrespective of whether the tenants of individual sites were in residence on any particular night. See Explanatory Notes 11 and 14. Occupancy measures from September quarter 1992 are therefore not comparable with those from previous quarters.

TABLE 3 — SUMMARY OF HOLIDAY FLATS, UNITS AND HOUSES, QUEENSLAND

| Particulars | Unit | Quarter ended | | | | Year ended | | | |
|--------------------------------------|------------|----------------|---------------|---------------|---------------|----------------|---------------|---------------|---------------|
| | | September 1992 | December 1992 | March 1993 | June 1993 | September 1993 | December 1993 | December 1992 | December 1993 |
| Letting entities | No. | 588 | 587 | 592 | 591 | 594 | 611 | .. | .. |
| Flats, units and houses | | | | | | | | | |
| Single bedroom | No. | 3,293 | 3,354 | 3,451 | 3,371 | 3,405 | 3,512 | .. | .. |
| Multiple bedroom | No. | 12,429 | 12,372 | 12,346 | 12,431 | 12,809 | 13,096 | .. | .. |
| <i>Total flats, units and houses</i> | <i>No.</i> | <i>15,722</i> | <i>15,726</i> | <i>15,797</i> | <i>15,802</i> | <i>16,214</i> | <i>16,608</i> | .. | .. |
| Bed spaces | No. | 62,986 | 63,254 | 63,089 | 63,683 | 65,054 | 66,574 | .. | .. |
| Employment (persons) (a) | No. | 1,898 | 1,960 | 1,968 | 1,961 | 2,031 | 2,160 | .. | .. |
| Unit nights occupied | No. | 963,320 | 852,533 | 810,823 | 726,634 | 1,062,658 | 901,951 | 3,209,272 | 3,502,066 |
| Unit occupancy rate | per cent | 66.6 | 59.0 | 57.0 | 50.5 | 71.3 | 59.1 | 56.4 | 59.6 |
| Unit lettings | No. | 130,141 | 136,676 | 124,399 | 117,300 | 149,742 | 147,452 | 482,227 | 538,893 |
| Average length of stay | days | 7.4 | 6.2 | 6.5 | 6.2 | 7.1 | 6.1 | 6.7 | 6.5 |
| Takings from accommodation | \$'000 | 50,803 | 47,736 | 49,462 | 38,248 | 57,485 | 54,078 | 178,383 | 199,273 |

(a) Employment numbers exclude real estate agents and their employees.

TABLE 4 — SUMMARY OF VISITOR HOSTELS, QUEENSLAND

| Particulars | Unit | Quarter ended | | | | Year ended | | | |
|----------------------------|----------|----------------|---------------|------------|-----------|----------------|---------------|---------------|---------------|
| | | September 1992 | December 1992 | March 1993 | June 1993 | September 1993 | December 1993 | December 1992 | December 1993 |
| Establishments | No. | 121 | 121 | 121 | 115 | 121 | 118 | .. | .. |
| Bed spaces | No. | 7,795 | 7,862 | 7,860 | 7,548 | 8,000 | 7,863 | .. | .. |
| Employment (persons) | No. | 564 | 549 | 526 | 505 | 552 | 543 | .. | .. |
| Guest nights | No. | 399,688 | 354,007 | 318,291 | 329,278 | 400,057 | 339,234 | 1,457,484 | 1,386,860 |
| Bed occupancy rate | per cent | 55.8 | 49.0 | 45.2 | 47.9 | 54.4 | 47.1 | 50.2 | 48.7 |
| Guest arrivals | No. | 144,522 | 126,689 | 117,488 | 123,535 | 156,127 | 124,599 | 560,465 | 521,749 |
| Average length of stay | days | 2.8 | 2.8 | 2.7 | 2.7 | 2.6 | 2.7 | 2.6 | 2.7 |
| Takings from accommodation | \$'000 | 4,449 | 3,945 | 3,635 | 3,787 | 4,542 | 3,782 | 16,021 | 15,746 |

TABLE 5 — HOTELS, MOTELS AND GUEST HOUSES WITH FACILITIES BY STAR GRADING, QUEENSLAND

| Particulars | Star grading | | | | | Ungraded | Total |
|---|--------------|---------|-----------|---------|---------|----------|-----------|
| | 1 | 2 | 3 | 4 | 5 | | |
| ESTABLISHMENTS, CAPACITY AND EMPLOYMENT | | | | | | | |
| <i>December quarter 1992—</i> | | | | | | | |
| Establishments | 31 | 463 | 380 | 47 | 17 | 176 | 1,114 |
| Guest rooms | 475 | 8,718 | 14,287 | 7,288 | 5,199 | 3,814 | 39,781 |
| Bed spaces | 1,301 | 26,128 | 43,480 | 23,020 | 14,676 | 11,885 | 120,490 |
| Employment (persons) | 238 | 3,988 | 7,336 | 5,297 | 8,520 | 2,963 | 28,342 |
| <i>December quarter 1993—</i> | | | | | | | |
| Establishments | 20 | 457 | 393 | 54 | 18 | 156 | 1,098 |
| Guest rooms | 300 | 8,550 | 14,930 | 7,803 | 5,533 | 3,009 | 40,125 |
| Bed spaces | 867 | 25,681 | 45,489 | 24,956 | 15,746 | 8,825 | 121,564 |
| Employment (persons) | 139 | 3,908 | 7,848 | 6,192 | 9,109 | 2,325 | 29,521 |
| ROOM NIGHTS OCCUPIED | | | | | | | |
| <i>December quarter 1992</i> | 18,445 | 390,675 | 755,310 | 426,716 | 334,679 | 178,345 | 2,104,170 |
| <i>1993</i> | | | | | | | |
| October | 3,542 | 147,383 | 307,239 | 182,041 | 133,884 | 49,230 | 823,319 |
| November | 3,368 | 128,013 | 279,965 | 168,032 | 131,104 | 42,620 | 753,102 |
| December | 3,821 | 126,456 | 267,455 | 161,663 | 132,309 | 42,592 | 734,296 |
| <i>December quarter 1993</i> | 10,731 | 401,852 | 854,659 | 511,736 | 397,297 | 134,442 | 2,310,717 |
| ROOM OCCUPANCY RATES (per cent) | | | | | | | |
| <i>December quarter 1992</i> | 42.2 | 48.7 | 57.5 | 63.6 | 70.0 | 52.2 | 57.6 |
| <i>1993—</i> | | | | | | | |
| October | 38.1 | 55.7 | 66.4 | 75.3 | 78.1 | 53.1 | 66.2 |
| November | 37.4 | 49.9 | 62.5 | 71.8 | 79.0 | 47.5 | 62.6 |
| December | 41.1 | 47.7 | 57.9 | 66.8 | 77.1 | 45.7 | 59.1 |
| <i>December quarter 1993</i> | 38.9 | 51.1 | 62.3 | 71.3 | 78.0 | 48.8 | 62.6 |
| GUEST NIGHTS | | | | | | | |
| <i>December quarter 1992</i> | 30,273 | 703,368 | 1,410,540 | 801,614 | 613,507 | 342,117 | 3,901,419 |
| <i>1993—</i> | | | | | | | |
| October | 5,887 | 265,704 | 565,479 | 349,191 | 244,390 | 91,507 | 1,522,158 |
| November | 5,677 | 221,516 | 496,538 | 307,957 | 224,736 | 76,780 | 1,333,204 |
| December | 6,723 | 245,033 | 539,194 | 327,502 | 259,680 | 84,468 | 1,462,600 |
| <i>December quarter 1993</i> | 18,287 | 732,253 | 1,601,211 | 984,650 | 728,806 | 252,755 | 4,317,962 |
| BED OCCUPANCY RATES (per cent) | | | | | | | |
| <i>December quarter 1992</i> | 25.3 | 29.3 | 35.3 | 37.9 | 45.4 | 32.3 | 35.3 |
| <i>1993</i> | | | | | | | |
| October | 21.9 | 33.4 | 40.1 | 45.1 | 50.1 | 33.7 | 40.4 |
| November | 21.8 | 28.8 | 36.4 | 41.1 | 47.6 | 29.2 | 36.6 |
| December | 25.0 | 30.8 | 38.3 | 42.3 | 53.2 | 30.9 | 38.8 |
| <i>December quarter 1993</i> | 22.9 | 31.0 | 38.3 | 42.9 | 50.3 | 31.3 | 38.6 |
| GUEST ARRIVALS | | | | | | | |
| <i>December quarter 1992</i> | 16,360 | 376,341 | 629,033 | 282,582 | 181,932 | 116,485 | 1,602,733 |
| <i>1993—</i> | | | | | | | |
| October | 3,163 | 142,148 | 254,550 | 120,829 | 76,395 | 29,803 | 626,888 |
| November | 2,970 | 118,373 | 225,967 | 114,006 | 76,639 | 27,542 | 565,497 |
| December | 3,270 | 128,989 | 243,619 | 118,917 | 82,473 | 27,284 | 604,552 |
| <i>December quarter 1993</i> | 9,403 | 389,510 | 724,136 | 353,752 | 235,507 | 84,629 | 1,796,937 |
| AVERAGE LENGTH OF STAY (days) | | | | | | | |
| <i>December quarter 1992</i> | 1.9 | 1.9 | 2.2 | 2.8 | 3.4 | 2.9 | 2.4 |
| <i>December quarter 1993</i> | 1.9 | 1.9 | 2.2 | 2.8 | 3.1 | 3.0 | 2.4 |
| TAKINGS FROM ACCOMMODATION (\$'000) | | | | | | | |
| <i>December quarter 1992</i> | 793 | 17,117 | 52,928 | 43,713 | 48,595 | 13,425 | 176,572 |
| <i>1993</i> | | | | | | | |
| October | 181 | 6,592 | 21,989 | 18,510 | 20,460 | 3,452 | 71,185 |
| November | 182 | 5,674 | 19,586 | 16,900 | 19,684 | 3,102 | 65,127 |
| December | 224 | 5,979 | 19,468 | 16,981 | 21,136 | 3,271 | 67,058 |
| <i>December quarter 1993</i> | 587 | 18,244 | 61,044 | 52,392 | 61,279 | 9,825 | 203,370 |

TABLE 6 — HOTELS, MOTELS AND GUEST HOUSES WITH FACILITIES BY STATISTICAL DIVISION, QUEENSLAND

| Particulars | Brisbane (SD) | | | Moreton (SD) | | | Wide Bay-Burnett (SD) | | |
|---|-----------------|--------------|---------|-----------------|--------------|-----------|-----------------------|--------------|---------|
| | Licensed hotels | Motels, etc. | Total | Licensed hotels | Motels, etc. | Total | Licensed hotels | Motels, etc. | Total |
| ESTABLISHMENTS, CAPACITY AND EMPLOYMENT | | | | | | | | | |
| <i>December quarter 1992—</i> | | | | | | | | | |
| Establishments | 38 | 96 | 134 | 43 | 212 | 255 | 24 | 104 | 128 |
| Guest rooms | 2,456 | 3,761 | 6,217 | 5,872 | 5,221 | 11,093 | 596 | 1,814 | 2,410 |
| Bed spaces | 6,325 | 11,053 | 17,378 | 17,705 | 16,435 | 34,140 | 1,838 | 5,744 | 7,582 |
| Employment (persons) | 3,244 | 1,805 | 5,049 | 8,429 | 1,774 | 10,203 | 465 | 579 | 1,044 |
| <i>December quarter 1993—</i> | | | | | | | | | |
| Establishments | 37 | 96 | 133 | 40 | 212 | 252 | 18 | 103 | 121 |
| Guest rooms | 2,443 | 3,765 | 6,208 | 5,841 | 5,150 | 10,991 | 531 | 1,832 | 2,363 |
| Bed spaces | 6,521 | 11,067 | 17,588 | 17,770 | 16,005 | 33,775 | 1,669 | 5,768 | 7,437 |
| Employment (persons) | 3,327 | 1,719 | 5,046 | 8,590 | 1,904 | 10,494 | 463 | 573 | 1,036 |
| ROOM NIGHTS OCCUPIED | | | | | | | | | |
| <i>December quarter 1992</i> | 151,000 | 207,955 | 358,955 | 363,582 | 277,833 | 641,415 | 21,914 | 76,739 | 98,653 |
| <i>1993—</i> | | | | | | | | | |
| October | 54,839 | 77,354 | 132,193 | 135,003 | 102,574 | 237,577 | 8,406 | 31,626 | 40,032 |
| November | 56,051 | 74,004 | 130,055 | 128,818 | 88,804 | 217,622 | 5,804 | 25,995 | 31,799 |
| December | 51,232 | 67,846 | 119,078 | 138,505 | 97,136 | 235,641 | 6,673 | 26,326 | 32,999 |
| <i>December quarter 1993</i> | 162,122 | 219,204 | 381,326 | 402,326 | 288,514 | 690,840 | 20,883 | 83,947 | 104,830 |
| ROOM OCCUPANCY RATES (per cent) | | | | | | | | | |
| <i>December quarter 1992</i> | 66.9 | 60.1 | 62.8 | 67.3 | 57.8 | 62.8 | 40.0 | 46.0 | 44.5 |
| <i>1993—</i> | | | | | | | | | |
| October | 72.4 | 66.6 | 68.9 | 74.6 | 64.3 | 69.7 | 51.1 | 55.7 | 54.6 |
| November | 76.5 | 65.9 | 70.1 | 73.5 | 57.5 | 66.0 | 36.4 | 47.3 | 44.9 |
| December | 67.6 | 58.3 | 62.0 | 76.5 | 60.8 | 69.2 | 40.5 | 46.4 | 45.0 |
| <i>December quarter 1993</i> | 72.1 | 63.6 | 67.0 | 74.9 | 60.9 | 68.3 | 42.7 | 49.8 | 48.2 |
| GUEST NIGHTS | | | | | | | | | |
| <i>December quarter 1992</i> | 220,872 | 353,528 | 574,400 | 739,997 | 594,277 | 1,334,274 | 45,559 | 136,329 | 181,888 |
| <i>1993—</i> | | | | | | | | | |
| October | 79,237 | 131,869 | 211,106 | 267,565 | 218,199 | 485,764 | 19,498 | 56,526 | 76,024 |
| November | 79,640 | 120,485 | 200,125 | 241,320 | 187,788 | 429,108 | 12,928 | 42,817 | 55,745 |
| December | 81,394 | 123,860 | 205,254 | 293,419 | 223,238 | 516,657 | 16,221 | 53,179 | 69,400 |
| <i>December quarter 1993</i> | 240,271 | 376,214 | 616,485 | 802,304 | 629,225 | 1,431,529 | 48,647 | 152,522 | 201,169 |
| BED OCCUPANCY RATES (per cent) | | | | | | | | | |
| <i>December quarter 1992</i> | 38.0 | 34.8 | 35.9 | 45.4 | 39.3 | 42.5 | 26.9 | 25.8 | 26.1 |
| <i>1993—</i> | | | | | | | | | |
| October | 39.2 | 38.7 | 38.9 | 48.6 | 44.0 | 46.4 | 37.7 | 31.6 | 33.0 |
| November | 40.7 | 36.5 | 38.1 | 45.3 | 39.1 | 42.4 | 25.8 | 24.7 | 25.0 |
| December | 40.3 | 36.2 | 37.7 | 53.3 | 45.0 | 49.3 | 31.4 | 29.7 | 30.1 |
| <i>December quarter 1993</i> | 40.0 | 37.1 | 38.2 | 49.1 | 42.7 | 46.1 | 31.7 | 28.7 | 29.4 |
| GUEST ARRIVALS | | | | | | | | | |
| <i>December quarter 1992</i> | 126,653 | 156,261 | 282,914 | 202,567 | 230,491 | 433,058 | 21,572 | 91,299 | 112,871 |
| <i>1993—</i> | | | | | | | | | |
| October | 42,611 | 60,752 | 103,363 | 78,929 | 85,815 | 164,744 | 8,601 | 39,180 | 47,781 |
| November | 45,217 | 55,909 | 101,126 | 76,887 | 74,993 | 151,880 | 6,346 | 29,828 | 36,174 |
| December | 44,516 | 58,258 | 102,774 | 86,903 | 82,526 | 169,429 | 6,742 | 35,644 | 42,386 |
| <i>December quarter 1993</i> | 132,344 | 174,919 | 307,263 | 242,719 | 243,334 | 486,053 | 21,689 | 104,652 | 126,341 |
| AVERAGE LENGTH OF STAY (days) | | | | | | | | | |
| <i>December quarter 1992</i> | 1.7 | 2.3 | 2.0 | 3.7 | 2.6 | 3.1 | 2.1 | 1.5 | 1.6 |
| <i>December quarter 1993</i> | 1.8 | 2.2 | 2.0 | 3.3 | 2.6 | 2.9 | 2.2 | 1.5 | 1.6 |
| TAKINGS FROM ACCOMMODATION (\$'000) | | | | | | | | | |
| <i>December quarter 1992</i> | 13,027 | 14,224 | 27,251 | 40,930 | 17,995 | 58,925 | 1,314 | 3,747 | 5,061 |
| <i>1993—</i> | | | | | | | | | |
| October | 5,102 | 5,357 | 10,459 | 15,285 | 6,550 | 21,835 | 600 | 1,526 | 2,127 |
| November | 5,291 | 5,129 | 10,419 | 14,318 | 5,484 | 19,802 | 363 | 1,247 | 1,610 |
| December | 4,622 | 4,709 | 9,332 | 17,170 | 6,929 | 24,099 | 411 | 1,371 | 1,782 |
| <i>December quarter 1993</i> | 15,015 | 15,195 | 30,210 | 46,772 | 18,963 | 65,735 | 1,375 | 4,144 | 5,519 |

TABLE 6 — HOTELS, MOTELS AND GUEST HOUSES WITH FACILITIES BY STATISTICAL DIVISION,
QUEENSLAND *continued*

| Particulars | Darling Downs (SD) | | | South-West (SD) | | Fitzroy (SD) | |
|---|--------------------|--------------|---------|-----------------|-----------------|--------------|---------|
| | Licensed hotels | Motels, etc. | Total | Total | Licensed hotels | Motels, etc. | Total |
| ESTABLISHMENTS, CAPACITY AND EMPLOYMENT | | | | | | | |
| <i>December quarter 1992</i> | | | | | | | |
| Establishments | 23 | 77 | 100 | 32 | 33 | 82 | 115 |
| Guest rooms | 392 | 1,331 | 1,723 | 487 | 1,084 | 1,997 | 3,081 |
| Bed spaces | 1,036 | 4,145 | 5,181 | 1,303 | 3,302 | 6,118 | 9,420 |
| Employment (persons) | 304 | 420 | 724 | 161 | 1,037 | 720 | 1,757 |
| <i>December quarter 1993—</i> | | | | | | | |
| Establishments | 20 | 80 | 100 | 30 | 32 | 83 | 115 |
| Guest rooms | 371 | 1,365 | 1,736 | 477 | 1,086 | 1,989 | 3,075 |
| Bed spaces | 992 | 4,270 | 5,262 | 1,289 | 3,184 | 6,110 | 9,294 |
| Employment (persons) | 291 | 458 | 749 | 154 | 1,151 | 741 | 1,892 |
| ROOM NIGHTS OCCUPIED | | | | | | | |
| <i>December quarter 1992</i> | 12,953 | 58,119 | 71,072 | 17,370 | 46,662 | 101,698 | 148,360 |
| <i>1993</i> | | | | | | | |
| October | 4,571 | 22,006 | 26,577 | 6,934 | 19,612 | 40,589 | 60,201 |
| November | 4,634 | 18,704 | 23,338 | 6,174 | 18,093 | 35,566 | 53,659 |
| December | 4,439 | 19,182 | 23,621 | 4,614 | 16,881 | 31,973 | 48,854 |
| <i>December quarter 1993</i> | 13,644 | 59,892 | 73,536 | 17,722 | 54,586 | 108,128 | 162,714 |
| ROOM OCCUPANCY RATES (per cent) | | | | | | | |
| <i>December quarter 1992</i> | 35.9 | 47.5 | 44.8 | 38.8 | 46.9 | 55.4 | 52.4 |
| <i>1993</i> | | | | | | | |
| October | 39.7 | 52.0 | 49.4 | 46.9 | 58.3 | 66.1 | 63.3 |
| November | 41.6 | 45.7 | 44.8 | 43.1 | 55.5 | 59.6 | 58.2 |
| December | 38.6 | 45.3 | 43.9 | 31.2 | 50.1 | 51.9 | 51.2 |
| <i>December quarter 1993</i> | 40.0 | 47.7 | 46.0 | 40.4 | 54.6 | 59.2 | 57.6 |
| GUEST NIGHTS | | | | | | | |
| <i>December quarter 1992</i> | 23,833 | 106,461 | 130,294 | 27,802 | 81,743 | 168,811 | 250,554 |
| <i>1993—</i> | | | | | | | |
| October | 8,006 | 41,600 | 49,606 | 10,299 | 36,418 | 66,538 | 102,956 |
| November | 7,427 | 33,774 | 41,201 | 8,734 | 31,975 | 53,891 | 85,866 |
| December | 7,545 | 38,359 | 45,904 | 7,735 | 33,615 | 58,368 | 91,983 |
| <i>December quarter 1993</i> | 22,978 | 113,733 | 136,711 | 26,768 | 102,008 | 178,797 | 280,805 |
| BED OCCUPANCY RATES (per cent) | | | | | | | |
| <i>December quarter 1992</i> | 25.0 | 27.9 | 27.3 | 23.2 | 27.0 | 30.0 | 28.9 |
| <i>1993—</i> | | | | | | | |
| October | 26.0 | 31.4 | 30.4 | 25.8 | 36.9 | 35.3 | 35.8 |
| November | 25.0 | 26.4 | 26.1 | 22.6 | 33.5 | 29.4 | 30.8 |
| December | 24.5 | 29.0 | 28.1 | 19.4 | 34.1 | 30.8 | 31.9 |
| <i>December quarter 1993</i> | 25.2 | 29.0 | 28.2 | 22.6 | 34.8 | 31.8 | 32.9 |
| GUEST ARRIVALS | | | | | | | |
| <i>December quarter 1992</i> | 12,901 | 79,573 | 92,474 | 18,917 | 32,911 | 105,328 | 138,239 |
| <i>1993—</i> | | | | | | | |
| October | 4,887 | 31,078 | 35,965 | 8,191 | 13,234 | 40,696 | 53,930 |
| November | 5,245 | 24,207 | 29,452 | 6,764 | 11,566 | 33,405 | 44,971 |
| December | 4,704 | 28,837 | 33,541 | 5,870 | 10,818 | 37,028 | 47,846 |
| <i>December quarter 1993</i> | 14,836 | 84,122 | 98,958 | 20,825 | 35,618 | 111,129 | 146,747 |
| AVERAGE LENGTH OF STAY (days) | | | | | | | |
| <i>December quarter 1992</i> | 1.8 | 1.3 | 1.4 | 1.5 | 2.5 | 1.6 | 1.8 |
| <i>December quarter 1993</i> | 1.5 | 1.4 | 1.4 | 1.3 | 2.9 | 1.6 | 1.9 |
| TAKINGS FROM ACCOMMODATION (\$'000) | | | | | | | |
| <i>December quarter 1992</i> | 623 | 3,034 | 3,657 | 781 | 4,079 | 5,251 | 9,330 |
| <i>1993</i> | | | | | | | |
| October | 219 | 1,180 | 1,399 | 319 | 1,596 | 2,219 | 3,815 |
| November | 217 | 981 | 1,198 | 281 | 1,467 | 1,921 | 3,388 |
| December | 207 | 1,040 | 1,247 | 219 | 1,647 | 1,713 | 3,360 |
| <i>December quarter 1993</i> | 644 | 3,201 | 3,845 | 818 | 4,709 | 5,853 | 10,563 |

TABLE 6 — HOTELS, MOTELS AND GUEST HOUSES WITH FACILITIES BY STATISTICAL DIVISION, QUEENSLAND—continued

| Particulars | Central-West (SD) | | | Mackay (SD) | | Northern (SD) | |
|--|-------------------|-----------------|--------------|-------------|-----------------|---------------|---------|
| | Total | Licensed hotels | Motels, etc. | Total | Licensed hotels | Motels, etc. | Total |
| ESTABLISHMENTS, CAPACITY AND EMPLOYMENT | | | | | | | |
| <i>December quarter 1992</i> | | | | | | | |
| Establishments | 15 | 28 | 58 | 86 | 23 | 56 | 79 |
| Guest rooms | 285 | 2,441 | 1,539 | 3,980 | 791 | 1,818 | 2,609 |
| Bed spaces | 888 | 7,830 | 5,084 | 12,914 | 2,275 | 5,492 | 7,767 |
| Employment (persons) | 102 | 2,120 | 610 | 2,730 | 1,077 | 615 | 1,692 |
| <i>December quarter 1993—</i> | | | | | | | |
| Establishments | 16 | 28 | 59 | 87 | 21 | 57 | 78 |
| Guest rooms | 297 | 2,669 | 1,591 | 4,260 | 782 | 1,824 | 2,606 |
| Bed spaces | 903 | 8,616 | 5,058 | 13,674 | 2,199 | 5,411 | 7,610 |
| Employment (persons) | 95 | 2,582 | 579 | 3,161 | 1,070 | 591 | 1,661 |
| ROOM NIGHTS OCCUPIED | | | | | | | |
| <i>December quarter 1992</i> | 10,991 | 131,964 | 75,295 | 207,259 | 39,570 | 82,974 | 122,544 |
| <i>1993</i> | | | | | | | |
| October | 4,382 | 50,918 | 28,022 | 78,940 | 14,577 | 29,215 | 43,792 |
| November | 3,211 | 48,281 | 25,180 | 73,461 | 14,771 | 28,272 | 43,043 |
| December | 2,969 | 51,138 | 26,242 | 77,380 | 13,961 | 27,340 | 41,301 |
| <i>December quarter 1993</i> | 10,562 | 150,337 | 79,444 | 229,781 | 43,309 | 84,827 | 128,136 |
| ROOM OCCUPANCY RATES (per cent) | | | | | | | |
| <i>December quarter 1992</i> | 41.9 | 61.1 | 53.3 | 58.0 | 54.4 | 49.6 | 51.1 |
| <i>1993—</i> | | | | | | | |
| October | 47.6 | 61.5 | 56.8 | 59.8 | 60.1 | 51.7 | 54.2 |
| November | 36.0 | 60.3 | 52.8 | 57.5 | 63.0 | 51.7 | 55.1 |
| December | 32.2 | 61.8 | 53.2 | 58.6 | 57.6 | 48.4 | 51.1 |
| <i>December quarter 1993</i> | 38.7 | 61.2 | 54.3 | 58.6 | 60.2 | 50.6 | 53.4 |
| GUEST NIGHTS | | | | | | | |
| <i>December quarter 1992</i> | 19,261 | 267,876 | 140,132 | 408,008 | 58,229 | 145,711 | 203,940 |
| <i>1993</i> | | | | | | | |
| October | 7,784 | 98,910 | 51,683 | 150,593 | 22,436 | 49,821 | 72,257 |
| November | 5,056 | 89,400 | 42,860 | 132,260 | 22,087 | 47,211 | 69,298 |
| December | 6,005 | 104,168 | 54,312 | 158,480 | 22,989 | 51,163 | 74,152 |
| <i>December quarter 1993</i> | 18,845 | 292,478 | 148,855 | 441,333 | 67,512 | 148,195 | 215,707 |
| BED OCCUPANCY RATES (per cent) | | | | | | | |
| <i>December quarter 1992</i> | 23.6 | 39.0 | 30.0 | 35.4 | 27.8 | 28.8 | 28.5 |
| <i>1993—</i> | | | | | | | |
| October | 27.8 | 37.0 | 33.0 | 35.5 | 32.9 | 29.7 | 30.6 |
| November | 18.7 | 34.6 | 28.2 | 32.2 | 33.5 | 29.1 | 30.4 |
| December | 21.5 | 39.0 | 34.6 | 37.4 | 33.7 | 30.5 | 31.4 |
| <i>December quarter 1993</i> | 22.7 | 36.9 | 32.0 | 35.1 | 33.4 | 29.8 | 30.8 |
| GUEST ARRIVALS | | | | | | | |
| <i>December quarter 1992</i> | 13,030 | 70,936 | 72,315 | 143,251 | 30,271 | 79,850 | 110,121 |
| <i>1993—</i> | | | | | | | |
| October | 5,449 | 26,814 | 24,426 | 51,240 | 13,371 | 27,589 | 40,960 |
| November | 3,792 | 28,094 | 21,253 | 49,347 | 13,211 | 26,298 | 39,509 |
| December | 4,514 | 28,916 | 27,114 | 56,030 | 14,868 | 28,856 | 43,724 |
| <i>December quarter 1993</i> | 13,755 | 83,824 | 72,793 | 156,617 | 41,450 | 82,743 | 124,193 |
| AVERAGE LENGTH OF STAY (days) | | | | | | | |
| <i>December quarter 1992</i> | 1.5 | 3.8 | 1.9 | 2.8 | 1.9 | 1.8 | 1.9 |
| <i>December quarter 1993</i> | 1.4 | 3.5 | 2.0 | 2.8 | 1.6 | 1.8 | 1.7 |
| TAKINGS FROM ACCOMMODATION (\$'000) | | | | | | | |
| <i>December quarter 1992</i> | 583 | 18,648 | 3,921 | 22,568 | 3,192 | 4,105 | 7,297 |
| <i>1993—</i> | | | | | | | |
| October | 239 | 6,800 | 1,642 | 8,441 | 1,143 | 1,486 | 2,629 |
| November | 165 | 6,383 | 1,427 | 7,810 | 1,207 | 1,458 | 2,665 |
| December | 162 | 7,134 | 1,534 | 8,667 | 1,162 | 1,356 | 2,517 |
| <i>December quarter 1993</i> | 566 | 20,317 | 4,602 | 24,918 | 3,511 | 4,299 | 7,810 |

TABLE 6 — HOTELS, MOTELS AND GUEST HOUSES WITH FACILITIES BY STATISTICAL DIVISION,
QUEENSLAND—continued

| Particulars | Far North (SD) | | | North-West (SD) | | | Queensland | | |
|---|-----------------|--------------|---------|-----------------|--------------|--------|-----------------|--------------|-----------|
| | Licensed hotels | Motels, etc. | Total | Licensed hotels | Motels, etc. | Total | Licensed hotels | Motels, etc. | Total |
| ESTABLISHMENTS, CAPACITY AND EMPLOYMENT | | | | | | | | | |
| <i>December quarter 1992</i> | | | | | | | | | |
| Establishments | 41 | 98 | 139 | 14 | 17 | 31 | 281 | 833 | 1,114 |
| Guest rooms | 3,640 | 3,665 | 7,305 | 230 | 361 | 591 | 17,670 | 22,111 | 39,781 |
| Bed spaces | 10,473 | 11,838 | 22,311 | 578 | 1,028 | 1,606 | 51,768 | 68,722 | 120,490 |
| Employment (persons) | 3,187 | 1,444 | 4,631 | 157 | 92 | 249 | 20,101 | 8,241 | 28,342 |
| <i>December quarter 1993</i> | | | | | | | | | |
| Establishments | 40 | 96 | 136 | 13 | 17 | 30 | 262 | 836 | 1,098 |
| Guest rooms | 3,801 | 3,728 | 7,529 | 222 | 361 | 583 | 17,917 | 22,208 | 40,125 |
| Bed spaces | 11,069 | 12,040 | 23,109 | 585 | 1,038 | 1,623 | 53,013 | 68,551 | 121,564 |
| Employment (persons) | 3,393 | 1,565 | 4,958 | 167 | 108 | 275 | 21,104 | 8,417 | 29,521 |
| ROOM NIGHTS OCCUPIED | | | | | | | | | |
| <i>December quarter 1992</i> | | | | | | | | | |
| | 198,969 | 202,915 | 401,884 | 8,361 | 17,306 | 25,667 | 980,061 | 1,124,109 | 2,104,170 |
| <i>1993</i> | | | | | | | | | |
| October | 98,405 | 83,821 | 182,226 | 3,819 | 6,646 | 10,465 | 392,290 | 431,029 | 823,319 |
| November | 85,962 | 75,964 | 161,926 | 3,186 | 5,628 | 8,814 | 367,415 | 385,687 | 753,102 |
| December | 76,638 | 63,671 | 140,309 | 2,588 | 4,942 | 7,530 | 363,166 | 371,130 | 734,296 |
| <i>December quarter 1993</i> | | | | | | | | | |
| | 261,005 | 223,456 | 484,461 | 9,593 | 17,216 | 26,809 | 1,122,871 | 1,187,846 | 2,310,717 |
| ROOM OCCUPANCY RATES (per cent) | | | | | | | | | |
| <i>December quarter 1992</i> | | | | | | | | | |
| | 59.4 | 60.2 | 59.8 | 39.5 | 52.1 | 47.2 | 60.6 | 55.3 | 57.6 |
| <i>1993</i> | | | | | | | | | |
| October | 83.5 | 72.5 | 78.1 | 55.5 | 59.4 | 57.9 | 70.6 | 62.7 | 66.2 |
| November | 75.4 | 67.9 | 71.7 | 47.8 | 52.0 | 50.4 | 68.4 | 57.9 | 62.6 |
| December | 65.3 | 55.1 | 60.2 | 37.6 | 44.2 | 41.7 | 65.4 | 53.9 | 59.1 |
| <i>December quarter 1993</i> | | | | | | | | | |
| | 74.7 | 65.2 | 70.0 | 47.0 | 51.8 | 50.0 | 68.1 | 58.2 | 62.6 |
| GUEST NIGHTS | | | | | | | | | |
| <i>December quarter 1992</i> | | | | | | | | | |
| | 362,876 | 371,706 | 734,582 | 10,664 | 25,752 | 36,416 | 1,818,636 | 2,082,783 | 3,901,419 |
| <i>1993</i> | | | | | | | | | |
| October | 182,659 | 157,853 | 340,512 | 5,142 | 10,115 | 15,257 | 723,023 | 799,135 | 1,522,158 |
| November | 157,399 | 136,074 | 293,473 | 3,947 | 8,391 | 12,338 | 648,604 | 684,600 | 1,333,204 |
| December | 150,908 | 124,895 | 275,803 | 3,337 | 7,890 | 11,227 | 715,152 | 747,448 | 1,462,600 |
| <i>December quarter 1993</i> | | | | | | | | | |
| | 490,966 | 418,822 | 909,788 | 12,426 | 26,396 | 38,822 | 2,086,779 | 2,231,183 | 4,317,962 |
| BED OCCUPANCY RATES (per cent) | | | | | | | | | |
| <i>December quarter 1992</i> | | | | | | | | | |
| | 37.7 | 34.1 | 35.8 | 20.1 | 27.2 | 24.6 | 38.5 | 32.9 | 35.3 |
| <i>1993</i> | | | | | | | | | |
| October | 53.2 | 42.3 | 47.5 | 28.4 | 31.4 | 30.3 | 44.0 | 37.7 | 40.4 |
| November | 47.4 | 37.7 | 42.3 | 22.5 | 26.9 | 25.3 | 40.8 | 33.3 | 36.6 |
| December | 44.2 | 33.5 | 38.6 | 18.4 | 24.5 | 22.3 | 43.6 | 35.2 | 38.8 |
| <i>December quarter 1993</i> | | | | | | | | | |
| | 48.3 | 37.8 | 42.8 | 23.1 | 27.6 | 26.0 | 42.8 | 35.4 | 38.6 |
| GUEST ARRIVALS | | | | | | | | | |
| <i>December quarter 1992</i> | | | | | | | | | |
| | 108,043 | 130,242 | 238,285 | 5,576 | 13,997 | 19,573 | 615,969 | 986,764 | 1,602,733 |
| <i>1993</i> | | | | | | | | | |
| October | 51,915 | 55,396 | 107,311 | 2,419 | 5,535 | 7,954 | 245,224 | 381,664 | 626,888 |
| November | 47,394 | 48,678 | 96,072 | 1,773 | 4,637 | 6,410 | 237,765 | 327,732 | 565,497 |
| December | 46,782 | 45,170 | 91,952 | 1,600 | 4,886 | 6,486 | 247,060 | 357,492 | 604,552 |
| <i>December quarter 1993</i> | | | | | | | | | |
| | 146,091 | 149,244 | 295,335 | 5,792 | 15,058 | 20,850 | 730,049 | 1,066,888 | 1,796,937 |
| AVERAGE LENGTH OF STAY (days) | | | | | | | | | |
| <i>December quarter 1992</i> | | | | | | | | | |
| | 3.4 | 2.9 | 3.1 | 1.9 | 1.8 | 1.9 | 3.0 | 2.1 | 2.4 |
| <i>December quarter 1993</i> | | | | | | | | | |
| | 3.4 | 2.8 | 3.1 | 2.1 | 1.8 | 1.9 | 2.9 | 2.1 | 2.4 |
| TAKINGS FROM ACCOMMODATION (\$'000) | | | | | | | | | |
| <i>December quarter 1992</i> | | | | | | | | | |
| | 25,996 | 13,781 | 39,777 | 364 | 977 | 1,341 | 108,343 | 68,229 | 176,572 |
| <i>1993</i> | | | | | | | | | |
| October | 13,391 | 5,972 | 19,363 | 170 | 389 | 559 | 44,399 | 26,786 | 71,185 |
| November | 11,944 | 5,371 | 17,315 | 140 | 336 | 475 | 41,403 | 23,724 | 65,127 |
| December | 10,823 | 4,458 | 15,281 | 119 | 274 | 392 | 43,340 | 23,718 | 67,058 |
| <i>December quarter 1993</i> | | | | | | | | | |
| | 36,159 | 15,801 | 51,960 | 428 | 998 | 1,427 | 129,142 | 74,229 | 203,370 |

AND SELECTED SUBDIVISIONS AND STATISTICAL LOCAL AREAS, QUEENSLAND, DECEMBER QUARTER 1993 *continued*

| <i>Guest nights</i> | | | | <i>Guest arrivals</i> | | | | <i>Takings from accommodation (\$'000)</i> | | | |
|---------------------|------------------|------------------|------------------|-----------------------|----------------|----------------|------------------|--|---------------|---------------|-----------------|
| <i>Oct.</i> | <i>Nov.</i> | <i>Dec.</i> | <i>Dec. qtr</i> | <i>Oct</i> | <i>Nov.</i> | <i>Dec.</i> | <i>Dec. qtr</i> | <i>Oct.</i> | <i>Nov.</i> | <i>Dec.</i> | <i>Dec. qtr</i> |
| 5,026 | 4,475 | 3,737 | 13,238 | 2,681 | 2,344 | 2,295 | 7,320 | 175 | 158 | 120 | 454 |
| 1,096 | 680 | 1,378 | 3,154 | 552 | 443 | 549 | 1,544 | 50 | 29 | 39 | 119 |
| 8,261 | 7,896 | 8,796 | 24,953 | 3,412 | 2,809 | 3,444 | 9,665 | 451 | 429 | 442 | 1,321 |
| 2,103 | 1,658 | 1,195 | 4,956 | 1,154 | 1,005 | 735 | 2,894 | 73 | 62 | 43 | 178 |
| 6,042 | 5,755 | 5,138 | 16,935 | 4,258 | 3,594 | 3,400 | 11,252 | 225 | 213 | 169 | 608 |
| 14,055 | 12,821 | 11,153 | 38,029 | 8,558 | 7,844 | 7,264 | 23,666 | 433 | 451 | 377 | 1,261 |
| 24,954 | 21,236 | 26,475 | 72,665 | 7,892 | 6,882 | 7,040 | 21,814 | 1,030 | 936 | 1,196 | 3,162 |
| 40,866 | 30,847 | 33,695 | 105,408 | 24,980 | 19,577 | 22,738 | 67,295 | 1,358 | 1,089 | 959 | 3,406 |
| 553 | 498 | 416 | 1,467 | 443 | 473 | 381 | 1,297 | 19 | 21 | 15 | 54 |
| <i>102,956</i> | <i>85,866</i> | <i>91,983</i> | <i>280,805</i> | <i>53,930</i> | <i>44,971</i> | <i>47,846</i> | <i>146,747</i> | <i>3,815</i> | <i>3,388</i> | <i>3,360</i> | <i>10,563</i> |
| 870 | 799 | 761 | 2,430 | 716 | 651 | 657 | 2,024 | 23 | 22 | 20 | 65 |
| 4,598 | 2,721 | 3,404 | 10,723 | 2,942 | 1,896 | 2,367 | 7,205 | 156 | 99 | 100 | 354 |
| 2,316 | 1,536 | 1,840 | 5,692 | 1,791 | 1,245 | 1,490 | 4,526 | 60 | 44 | 43 | 147 |
| <i>7,784</i> | <i>5,056</i> | <i>6,005</i> | <i>18,845</i> | <i>5,449</i> | <i>3,792</i> | <i>4,514</i> | <i>13,755</i> | <i>239</i> | <i>165</i> | <i>162</i> | <i>566</i> |
| 2,132 | 2,682 | 2,190 | 7,004 | 1,477 | 1,675 | 1,378 | 4,530 | 78 | 97 | 72 | 246 |
| 26,345 | 21,668 | 27,055 | 75,068 | 14,935 | 12,748 | 16,514 | 44,197 | 851 | 743 | 755 | 2,349 |
| 26,545 | 18,356 | 26,475 | 71,376 | 5,424 | 5,286 | 6,488 | 17,198 | 1,006 | 751 | 954 | 2,710 |
| 3,423 | 3,206 | 3,776 | 10,405 | 1,876 | 1,970 | 2,329 | 6,175 | 76 | 76 | 85 | 237 |
| 90,254 | 84,514 | 96,889 | 271,657 | 26,501 | 26,611 | 28,305 | 81,417 | 6,364 | 6,077 | 6,729 | 19,171 |
| 1,894 | 1,834 | 2,095 | 5,823 | 1,027 | 1,057 | 1,016 | 3,100 | 67 | 66 | 71 | 204 |
| <i>150,593</i> | <i>132,260</i> | <i>158,480</i> | <i>441,333</i> | <i>51,240</i> | <i>49,347</i> | <i>56,030</i> | <i>156,617</i> | <i>8,441</i> | <i>7,810</i> | <i>8,667</i> | <i>24,918</i> |
| 4,190 | 3,976 | 4,271 | 12,437 | 2,574 | 2,481 | 2,362 | 7,417 | 104 | 110 | 101 | 315 |
| 2,768 | 2,398 | 2,260 | 7,426 | 1,936 | 1,902 | 1,739 | 5,577 | 77 | 72 | 58 | 207 |
| 4,109 | 3,704 | 3,721 | 11,534 | 2,489 | 2,212 | 2,199 | 6,900 | 118 | 110 | 110 | 337 |
| 1,298 | 1,353 | 1,252 | 3,903 | 1,072 | 1,077 | 993 | 3,142 | 31 | 33 | 27 | 90 |
| 17,180 | 17,130 | 18,181 | 52,491 | 11,216 | 11,113 | 12,638 | 34,967 | 900 | 943 | 934 | 2,777 |
| 3,177 | 2,691 | 2,768 | 8,636 | 1,828 | 1,602 | 1,858 | 5,288 | 71 | 67 | 59 | 197 |
| 3,279 | 2,599 | 3,559 | 9,437 | 2,340 | 1,992 | 2,205 | 6,537 | 86 | 66 | 86 | 237 |
| 10,804 | 11,751 | 10,422 | 32,977 | 4,186 | 4,255 | 4,062 | 12,503 | 320 | 366 | 261 | 947 |
| 4,961 | 4,495 | 4,441 | 13,897 | 2,841 | 3,003 | 2,850 | 8,694 | 103 | 103 | 99 | 305 |
| 1,756 | 1,575 | 2,168 | 5,499 | 1,069 | 991 | 1,351 | 3,411 | 40 | 36 | 47 | 122 |
| 18,352 | 17,241 | 20,779 | 56,372 | 9,209 | 8,680 | 11,308 | 29,197 | 765 | 746 | 724 | 2,235 |
| 59,509 | 57,482 | 62,318 | 179,309 | 32,689 | 31,636 | 36,272 | 100,597 | 2,284 | 2,327 | 2,209 | 6,820 |
| 383 | 385 | 330 | 1,098 | 200 | 201 | 159 | 560 | 14 | 13 | 13 | 40 |
| <i>72,257</i> | <i>69,298</i> | <i>74,152</i> | <i>215,707</i> | <i>40,960</i> | <i>39,509</i> | <i>43,724</i> | <i>124,193</i> | <i>2,629</i> | <i>2,665</i> | <i>2,517</i> | <i>7,810</i> |
| 2,429 | 1,983 | 2,428 | 6,840 | 1,735 | 1,473 | 1,571 | 4,779 | 59 | 48 | 57 | 164 |
| 197,335 | 174,273 | 170,376 | 541,984 | 65,155 | 58,185 | 55,807 | 179,147 | 9,766 | 8,945 | 8,145 | 26,856 |
| 13,570 | 12,192 | 12,060 | 37,822 | 4,602 | 4,487 | 4,287 | 13,376 | 1,390 | 1,279 | 1,191 | 3,860 |
| 57,270 | 47,717 | 39,321 | 144,308 | 13,576 | 12,022 | 11,295 | 36,893 | 4,902 | 4,361 | 3,773 | 13,037 |
| 1,643 | 1,397 | 1,900 | 4,940 | 1,316 | 1,099 | 1,356 | 3,771 | 38 | 34 | 38 | 110 |
| 734 | 653 | 400 | 1,787 | 313 | 354 | 252 | 919 | 15 | 14 | 8 | 38 |
| 8,294 | 6,750 | 5,957 | 21,001 | 4,143 | 3,324 | 3,008 | 10,475 | 231 | 193 | 174 | 598 |
| 4,427 | 3,054 | 2,487 | 9,968 | 1,605 | 1,272 | 1,098 | 3,975 | 124 | 89 | 75 | 288 |
| 49,191 | 41,006 | 36,956 | 127,153 | 11,887 | 11,481 | 11,234 | 34,602 | 2,189 | 1,781 | 1,442 | 5,412 |
| 5,619 | 4,448 | 3,918 | 13,985 | 2,979 | 2,375 | 2,044 | 7,398 | 649 | 570 | 378 | 1,597 |
| <i>340,512</i> | <i>293,473</i> | <i>275,803</i> | <i>909,788</i> | <i>107,311</i> | <i>96,072</i> | <i>91,952</i> | <i>295,335</i> | <i>19,363</i> | <i>17,315</i> | <i>15,281</i> | <i>51,960</i> |
| 1,092 | 756 | 455 | 2,303 | 590 | 395 | 263 | 1,248 | 39 | 29 | 15 | 83 |
| 1,881 | 1,870 | 1,563 | 5,314 | 1,026 | 941 | 816 | 2,783 | 60 | 54 | 46 | 161 |
| 1,394 | 1,118 | 1,033 | 3,545 | 910 | 722 | 742 | 2,374 | 35 | 30 | 28 | 92 |
| 9,762 | 7,716 | 7,426 | 24,904 | 4,612 | 3,720 | 4,031 | 12,363 | 395 | 337 | 283 | 1,015 |
| 1,128 | 878 | 750 | 2,756 | 816 | 632 | 634 | 2,082 | 31 | 25 | 20 | 76 |
| <i>15,257</i> | <i>12,338</i> | <i>11,227</i> | <i>38,822</i> | <i>7,954</i> | <i>6,410</i> | <i>6,486</i> | <i>20,850</i> | <i>559</i> | <i>475</i> | <i>392</i> | <i>1,427</i> |
| <i>1,522,158</i> | <i>1,333,204</i> | <i>1,462,600</i> | <i>4,317,962</i> | <i>626,888</i> | <i>565,497</i> | <i>604,552</i> | <i>1,796,937</i> | <i>71,185</i> | <i>65,127</i> | <i>67,058</i> | <i>203,370</i> |
| 27,010 | 21,203 | 25,920 | 74,133 | 10,700 | 9,043 | 10,347 | 30,090 | 961 | 819 | 1,274 | 3,054 |
| 11,545 | 8,628 | 12,327 | 32,500 | 5,744 | 4,226 | 5,951 | 15,921 | 505 | 411 | 507 | 1,423 |
| 3,769 | 3,350 | 4,493 | 11,612 | 2,514 | 2,378 | 2,909 | 7,801 | 116 | 104 | 115 | 334 |
| 107,939 | 98,721 | 110,115 | 316,775 | 26,995 | 27,601 | 28,449 | 83,045 | 9,097 | 8,532 | 9,092 | 26,721 |
| 111,947 | 88,389 | 109,840 | 310,176 | 43,068 | 36,056 | 40,833 | 119,957 | 4,750 | 3,727 | 5,026 | 13,502 |

TABLE 8 — HOLIDAY FLATS, UNITS AND HOUSES BY STATISTICAL DIVISION, QUEENSLAND

| Particulars | Brisbane (SD) | | | Moreton (SD) | | | Wide Bay-Burnett (SD) | | | Fitzroy (SD) |
|---|--------------------|------------------------|--------|--------------------|------------------------|---------|-----------------------|------------------------|--------|--------------|
| | Real estate agents | Other letting entities | Total | Real estate agents | Other letting entities | Total | Real estate agents | Other letting entities | Total | Total |
| LETTING ENTITIES, CAPACITY AND EMPLOYMENT | | | | | | | | | | |
| <i>December quarter 1992—</i> | | | | | | | | | | |
| Letting entities | 4 | 22 | 26 | 62 | 329 | 391 | 14 | 23 | 37 | 11 |
| Flats, units and houses | | | | | | | | | | |
| Single bedroom | n.p. | n.p. | 127 | 183 | 2,069 | 2,252 | 23 | 25 | 48 | 53 |
| Multiple bedroom | n.p. | n.p. | 401 | 3,698 | 6,620 | 10,318 | 388 | 178 | 566 | 45 |
| <i>Total flats, units and houses</i> | n.p. | n.p. | 528 | 3,881 | 8,689 | 12,570 | 411 | 203 | 614 | 98 |
| Bed spaces | n.p. | n.p. | 2,119 | 16,989 | 33,272 | 50,261 | 1,917 | 828 | 2,745 | 390 |
| Employment (persons) (a) | n.p. | n.p. | 80 | — | 1,383 | 1,383 | — | 61 | 61 | 28 |
| <i>December quarter 1993—</i> | | | | | | | | | | |
| Letting entities | 5 | 26 | 31 | 62 | 340 | 402 | 16 | 23 | 39 | 11 |
| Flats, units and houses | | | | | | | | | | |
| Single bedroom | 13 | 170 | 183 | 190 | 2,155 | 2,345 | 26 | 29 | 55 | 53 |
| Multiple bedroom | 205 | 299 | 504 | 3,768 | 7,013 | 10,781 | 405 | 160 | 565 | 44 |
| <i>Total flats, units and houses</i> | 218 | 469 | 687 | 3,958 | 9,168 | 13,126 | 431 | 189 | 620 | 97 |
| Bed spaces | 1,177 | 1,885 | 3,062 | 16,981 | 35,203 | 52,184 | 2,065 | 809 | 2,874 | 386 |
| Employment (persons) (a) | — | 93 | 93 | — | 1,510 | 1,510 | — | 68 | 68 | 26 |
| UNIT NIGHTS OCCUPIED | | | | | | | | | | |
| <i>December quarter 1992</i> | n.p. | n.p. | 30,769 | 182,975 | 523,460 | 706,435 | 13,326 | 10,881 | 24,207 | 5,151 |
| <i>1993—</i> | | | | | | | | | | |
| October | 3,391 | 8,770 | 12,161 | 62,279 | 199,257 | 261,536 | 5,034 | 3,897 | 8,931 | 1,846 |
| November | 3,337 | 7,549 | 10,886 | 54,903 | 172,606 | 227,509 | 3,132 | 2,873 | 6,005 | 1,465 |
| December | 5,115 | 8,559 | 13,674 | 76,340 | 183,068 | 259,408 | 4,899 | 2,897 | 7,796 | 1,714 |
| <i>December quarter 1993</i> | 11,843 | 24,878 | 36,721 | 193,522 | 554,931 | 748,453 | 13,065 | 9,667 | 22,732 | 5,025 |
| UNIT OCCUPANCY RATES (per cent) | | | | | | | | | | |
| <i>December quarter 1992</i> | n.p. | n.p. | 63.3 | 51.2 | 65.6 | 61.2 | 35.2 | 58.5 | 42.9 | 57.1 |
| <i>1993—</i> | | | | | | | | | | |
| October | 50.2 | 60.3 | 57.1 | 50.8 | 70.2 | 64.3 | 37.7 | 66.5 | 46.5 | 61.4 |
| November | 51.0 | 53.7 | 52.8 | 46.2 | 62.8 | 57.8 | 24.2 | 50.9 | 32.3 | 50.3 |
| December | 75.7 | 58.9 | 64.2 | 62.2 | 64.4 | 63.8 | 36.7 | 49.4 | 40.6 | 57.0 |
| <i>December quarter 1993</i> | 59.0 | 57.7 | 58.1 | 53.1 | 65.8 | 62.0 | 32.9 | 55.7 | 39.9 | 56.3 |
| UNIT LETTINGS | | | | | | | | | | |
| <i>December quarter 1992</i> | n.p. | n.p. | 6,525 | 17,124 | 87,273 | 104,397 | 1,583 | 2,204 | 3,787 | 1,807 |
| <i>1993—</i> | | | | | | | | | | |
| October | 493 | 1,558 | 2,051 | 6,076 | 34,786 | 40,862 | 621 | 931 | 1,552 | 677 |
| November | 474 | 1,327 | 1,801 | 5,169 | 29,922 | 35,091 | 440 | 658 | 1,098 | 565 |
| December | 802 | 1,443 | 2,245 | 7,689 | 31,443 | 39,132 | 625 | 692 | 1,317 | 620 |
| <i>December quarter 1993</i> | 1,769 | 4,328 | 6,097 | 18,934 | 96,151 | 115,085 | 1,686 | 2,281 | 3,967 | 1,862 |
| AVERAGE LENGTH OF STAY (days) | | | | | | | | | | |
| <i>December quarter 1992</i> | n.p. | n.p. | 4.7 | 10.7 | 6.0 | 6.8 | 8.4 | 4.9 | 6.4 | 2.9 |
| <i>1993—</i> | | | | | | | | | | |
| October | 6.9 | 5.6 | 5.9 | 10.3 | 5.7 | 6.4 | 8.1 | 4.2 | 5.8 | 2.7 |
| November | 7.0 | 5.7 | 6.0 | 10.6 | 5.8 | 6.5 | 7.1 | 4.4 | 5.5 | 2.6 |
| December | 6.4 | 5.9 | 6.1 | 9.9 | 5.8 | 6.6 | 7.8 | 4.2 | 5.9 | 2.8 |
| <i>December quarter 1993</i> | 6.7 | 5.7 | 6.0 | 10.2 | 5.8 | 6.5 | 7.7 | 4.2 | 5.7 | 2.7 |
| TAKINGS FROM ACCOMMODATION (\$'000) | | | | | | | | | | |
| <i>December quarter 1992</i> | n.p. | n.p. | 1,715 | 6,468 | 32,456 | 38,924 | 454 | 415 | 868 | 224 |
| <i>1993—</i> | | | | | | | | | | |
| October | 70 | 562 | 633 | 2,257 | 12,149 | 14,406 | 119 | 152 | 270 | 81 |
| November | 77 | 488 | 565 | 1,813 | 10,318 | 12,131 | 85 | 109 | 194 | 62 |
| December | 146 | 583 | 729 | 3,553 | 14,110 | 17,663 | 226 | 152 | 378 | 76 |
| <i>December quarter 1993</i> | 294 | 1,633 | 1,927 | 7,624 | 36,577 | 44,201 | 430 | 412 | 842 | 219 |

TABLE 8 — HOLIDAY FLATS, UNITS AND HOUSES BY STATISTICAL DIVISION, QUEENSLAND—continued

| Particulars | Mackay (SD) | Northern (SD) | | Far North (SD) | Balance of State | Queensland | | Total | |
|---|---------------|--------------------|------------------------|----------------|------------------|--------------|--------------------|----------------|------------------------|
| | Total | Real estate agents | Other letting entities | Total | Total | Total | Real estate agents | | Other letting entities |
| LETTING ENTITIES, CAPACITY AND EMPLOYMENT | | | | | | | | | |
| <i>December quarter 1992—</i> | | | | | | | | | |
| Letting entities | 21 | 2 | 25 | 27 | 73 | 1 | 86 | 501 | 587 |
| Flats, units and houses | | | | | | | | | |
| Single bedroom | 112 | n.p. | n.p. | 122 | 623 | n.p. | 257 | 3,097 | 3,354 |
| Multiple bedroom | 129 | n.p. | n.p. | 151 | 745 | n.p. | 4,384 | 7,988 | 12,372 |
| <i>Total flats, units and houses</i> | <i>241</i> | <i>n.p.</i> | <i>n.p.</i> | <i>273</i> | <i>1,368</i> | <i>n.p.</i> | <i>4,641</i> | <i>11,085</i> | <i>15,726</i> |
| Bed spaces | 1,040 | n.p. | n.p. | 1,250 | 5,303 | n.p. | 20,408 | 42,846 | 63,254 |
| Employment (persons) (a) | 72 | n.p. | n.p. | 59 | 275 | n.p. | — | 1,960 | 1,960 |
| <i>December quarter 1993—</i> | | | | | | | | | |
| Letting entities | 20 | 4 | 26 | 30 | 73 | 5 | 91 | 520 | 611 |
| Flats, units and houses | | | | | | | | | |
| Single bedroom | 93 | 3 | 131 | 134 | 629 | 20 | 272 | 3,240 | 3,512 |
| Multiple bedroom | 111 | 57 | 117 | 174 | 890 | 27 | 4,548 | 8,548 | 13,096 |
| <i>Total flats, units and houses</i> | <i>204</i> | <i>60</i> | <i>248</i> | <i>308</i> | <i>1,519</i> | <i>47</i> | <i>4,820</i> | <i>11,788</i> | <i>16,608</i> |
| Bed spaces | 906 | 337 | 1,059 | 1,396 | 5,451 | 315 | 21,193 | 45,381 | 66,574 |
| Employment (persons) (a) | 77 | — | 68 | 68 | 305 | 13 | — | 2,160 | 2,160 |
| UNIT NIGHTS OCCUPIED | | | | | | | | | |
| <i>December quarter 1992</i> | <i>14,096</i> | <i>n.p.</i> | <i>n.p.</i> | <i>10,127</i> | <i>61,272</i> | <i>n.p.</i> | <i>209,911</i> | <i>642,622</i> | <i>852,533</i> |
| <i>1993</i> | | | | | | | | | |
| October | 3,710 | 316 | 3,903 | 4,219 | 26,447 | 800 | 72,195 | 247,455 | 319,650 |
| November | 3,006 | 224 | 3,296 | 3,520 | 20,227 | 701 | 62,618 | 210,701 | 273,319 |
| December | 3,949 | 451 | 3,661 | 4,112 | 17,527 | 802 | 87,872 | 221,110 | 308,982 |
| <i>December quarter 1993</i> | <i>10,665</i> | <i>991</i> | <i>10,860</i> | <i>11,851</i> | <i>64,201</i> | <i>2,303</i> | <i>222,685</i> | <i>679,266</i> | <i>901,951</i> |
| UNIT OCCUPANCY RATES (per cent) | | | | | | | | | |
| <i>December quarter 1992</i> | <i>63.6</i> | <i>n.p.</i> | <i>n.p.</i> | <i>40.3</i> | <i>48.7</i> | <i>n.p.</i> | <i>49.2</i> | <i>63.1</i> | <i>59.0</i> |
| <i>1993—</i> | | | | | | | | | |
| October | 58.7 | 17.0 | 50.8 | 44.2 | 56.2 | 54.9 | 48.3 | 67.8 | 62.1 |
| November | 49.1 | 12.4 | 44.3 | 38.1 | 44.4 | 49.7 | 43.3 | 59.6 | 54.9 |
| December | 62.4 | 24.2 | 47.6 | 43.1 | 37.2 | 55.0 | 58.8 | 60.5 | 60.0 |
| <i>December quarter 1993</i> | <i>56.8</i> | <i>18.0</i> | <i>47.6</i> | <i>41.8</i> | <i>45.9</i> | <i>53.3</i> | <i>50.2</i> | <i>62.7</i> | <i>59.1</i> |
| UNIT LETTINGS | | | | | | | | | |
| <i>December quarter 1992</i> | <i>4,152</i> | <i>n.p.</i> | <i>n.p.</i> | <i>2,376</i> | <i>13,449</i> | <i>n.p.</i> | <i>22,533</i> | <i>114,143</i> | <i>136,676</i> |
| <i>1993—</i> | | | | | | | | | |
| October | 1,066 | 46 | 857 | 903 | 5,451 | 383 | 7,360 | 45,585 | 52,945 |
| November | 918 | 33 | 759 | 792 | 4,347 | 356 | 6,190 | 38,778 | 44,968 |
| December | 999 | 66 | 778 | 844 | 4,025 | 357 | 9,307 | 40,232 | 49,539 |
| <i>December quarter 1993</i> | <i>2,983</i> | <i>145</i> | <i>2,394</i> | <i>2,539</i> | <i>13,823</i> | <i>1,096</i> | <i>22,857</i> | <i>124,595</i> | <i>147,452</i> |
| AVERAGE LENGTH OF STAY (days) | | | | | | | | | |
| <i>December quarter 1992</i> | <i>3.4</i> | <i>n.p.</i> | <i>n.p.</i> | <i>4.3</i> | <i>4.6</i> | <i>n.p.</i> | <i>9.3</i> | <i>5.6</i> | <i>6.2</i> |
| <i>1993—</i> | | | | | | | | | |
| October | 3.5 | 6.9 | 4.6 | 4.7 | 4.9 | 2.1 | 9.8 | 5.4 | 6.0 |
| November | 3.3 | 6.8 | 4.3 | 4.4 | 4.7 | 2.0 | 10.1 | 5.4 | 6.1 |
| December | 4.0 | 6.8 | 4.7 | 4.9 | 4.4 | 2.2 | 9.4 | 5.5 | 6.2 |
| <i>December quarter 1993</i> | <i>3.6</i> | <i>6.8</i> | <i>4.5</i> | <i>4.7</i> | <i>4.6</i> | <i>2.1</i> | <i>9.7</i> | <i>5.5</i> | <i>6.1</i> |
| TAKINGS FROM ACCOMMODATION (\$'000) | | | | | | | | | |
| <i>December quarter 1992</i> | <i>655</i> | <i>n.p.</i> | <i>n.p.</i> | <i>538</i> | <i>4,785</i> | <i>n.p.</i> | <i>7,453</i> | <i>40,283</i> | <i>47,736</i> |
| <i>1993</i> | | | | | | | | | |
| October | 226 | 12 | 211 | 223 | 2,245 | 37 | 2,523 | 15,599 | 18,121 |
| November | 157 | 8 | 172 | 180 | 1,742 | 31 | 2,032 | 13,031 | 15,063 |
| December | 208 | 21 | 204 | 225 | 1,579 | 36 | 4,013 | 16,881 | 20,893 |
| <i>December quarter 1993</i> | <i>591</i> | <i>41</i> | <i>586</i> | <i>628</i> | <i>5,566</i> | <i>105</i> | <i>8,568</i> | <i>45,510</i> | <i>54,078</i> |

(a) Employment numbers exclude real estate agents and their employees.

TABLE 9—HOLIDAY FLATS, UNITS AND HOUSES: STATISTICAL DIVISIONS

| Statistical Divisions and Selected Subdivisions and Statistical Local Areas | Flats, units and houses | | | | Bed spaces | Employment (persons) (a) | Unit nights occupied | | | |
|---|-------------------------|----------------|------------------|--------|------------|--------------------------|----------------------|---------|---------|----------|
| | Letting entities | Single bedroom | Multiple bedroom | Total | | | Oct. | Nov. | Dec. | Dec. qtr |
| Brisbane City Core (b) | | | | | | | | | | |
| Spring Hill | 3 | 47 | 52 | 99 | 371 | 18 | 2,228 | 1,977 | 1,864 | 6,069 |
| Balance | 5 | 36 | 38 | 74 | 252 | 12 | 1,519 | 1,403 | 1,569 | 4,491 |
| <i>Total</i> | 8 | 83 | 90 | 173 | 623 | 30 | 3,747 | 3,380 | 3,433 | 10,560 |
| Brisbane City (SSD) — Balance | 12 | 40 | 146 | 186 | 790 | 41 | 3,310 | 2,705 | 3,188 | 9,203 |
| <i>Brisbane City (SSD)</i> | 20 | 123 | 236 | 359 | 1,413 | 71 | 7,057 | 6,085 | 6,621 | 19,763 |
| Redland (S) — Balance (c) | 8 | 58 | 228 | 286 | 1,466 | 20 | 4,421 | 4,197 | 6,408 | 15,026 |
| Balance | 3 | 2 | 40 | 42 | 183 | 2 | 683 | 604 | 645 | 1,932 |
| <i>Brisbane (SD)</i> | 31 | 183 | 504 | 687 | 3,062 | 93 | 12,161 | 10,886 | 13,674 | 36,721 |
| Gold Coast City (SSD) | | | | | | | | | | |
| Biggera Waters | 4 | 15 | 94 | 109 | 444 | 9 | 2,304 | 1,556 | 1,929 | 5,789 |
| Broadbeach | 21 | 170 | 498 | 668 | 2,432 | 110 | 13,381 | 11,667 | 12,490 | 37,538 |
| Burleigh Heads | 26 | 127 | 775 | 902 | 3,506 | 118 | 18,218 | 14,817 | 17,787 | 50,822 |
| Coolangatta | 26 | 104 | 833 | 937 | 3,703 | 82 | 20,295 | 18,321 | 20,505 | 59,121 |
| Currumbin | 5 | 7 | 178 | 185 | 924 | 24 | 3,457 | 2,741 | 3,604 | 9,802 |
| Labrador | 5 | 10 | 40 | 50 | 195 | 10 | 960 | 902 | 905 | 2,767 |
| Main Beach-Broadwater | 12 | 13 | 215 | 228 | 927 | 41 | 3,992 | 3,069 | 3,487 | 10,548 |
| Mermaid Beach | 14 | 20 | 319 | 339 | 1,388 | 26 | 6,942 | 5,206 | 6,656 | 18,804 |
| Miami | 5 | 3 | 64 | 67 | 279 | 11 | 1,286 | 941 | 1,093 | 3,320 |
| Palm Beach | 13 | 69 | 313 | 382 | 1,508 | 42 | 6,927 | 5,584 | 7,246 | 19,757 |
| Surfers Paradise | 110 | 1,418 | 2,317 | 3,735 | 12,912 | 586 | 84,468 | 76,694 | 75,690 | 237,122 |
| Tugun | 7 | 8 | 245 | 253 | 1,022 | 18 | 5,145 | 3,773 | 5,199 | 14,117 |
| Balance | 5 | 21 | 56 | 77 | 269 | 14 | 1,470 | 1,149 | 1,392 | 4,011 |
| <i>Total</i> | 253 | 1,985 | 5,947 | 7,932 | 29,509 | 1,091 | 168,845 | 146,420 | 158,253 | 473,518 |
| Sunshine Coast | | | | | | | | | | |
| Statistical District (d) | | | | | | | | | | |
| Caloundra (C) — Part A | 24 | 38 | 1,119 | 1,157 | 5,384 | 45 | 19,007 | 18,078 | 24,670 | 61,755 |
| Maroochy (S) — Part A | 47 | 111 | 1,415 | 1,526 | 6,583 | 132 | 24,779 | 22,081 | 29,374 | 76,234 |
| Noosa (S) — Part A | 67 | 198 | 1,870 | 2,068 | 8,599 | 214 | 40,925 | 33,748 | 39,267 | 113,940 |
| <i>Total</i> | 138 | 347 | 4,404 | 4,751 | 20,566 | 391 | 84,711 | 73,907 | 93,311 | 251,929 |
| Balance | 11 | 13 | 430 | 443 | 2,109 | 28 | 7,980 | 7,182 | 7,844 | 23,006 |
| <i>Moreton (SD)</i> | 402 | 2,345 | 10,781 | 13,126 | 52,184 | 1,510 | 261,536 | 227,509 | 259,408 | 748,453 |
| Hervey Bay (C) | 31 | 36 | 445 | 481 | 2,272 | 52 | 7,105 | 4,523 | 5,955 | 17,583 |
| Woongarra (S) — Parts A and B | 4 | 8 | 56 | 64 | 259 | 9 | 874 | 762 | 784 | 2,420 |
| Balance | 4 | 11 | 64 | 75 | 343 | 7 | 952 | 720 | 1,057 | 2,729 |
| <i>Wide Bay-Burnett (SD)</i> | 39 | 55 | 565 | 620 | 2,874 | 68 | 8,931 | 6,005 | 7,796 | 22,732 |
| <i>Fitzroy (SD)</i> | 11 | 53 | 44 | 97 | 386 | 26 | 1,846 | 1,465 | 1,714 | 5,025 |
| Whitsunday (S) | 15 | 77 | 51 | 128 | 510 | 56 | 2,320 | 1,818 | 2,445 | 6,583 |
| Balance | 5 | 16 | 60 | 76 | 396 | 21 | 1,390 | 1,188 | 1,504 | 4,082 |
| <i>Mackay (SD)</i> | 20 | 93 | 111 | 204 | 906 | 77 | 3,710 | 3,006 | 3,949 | 10,665 |
| Townsville City (SSD) | | | | | | | | | | |
| Magnetic Island | 13 | 53 | 88 | 141 | 681 | 21 | 1,445 | 1,022 | 1,474 | 3,941 |
| North Ward-Castle Hill | 6 | 13 | 43 | 56 | 230 | 13 | 1,101 | 1,210 | 1,165 | 3,476 |
| Balance | 3 | 18 | 19 | 37 | 153 | 10 | 700 | 541 | 530 | 1,771 |
| <i>Total</i> | 22 | 84 | 150 | 234 | 1,064 | 44 | 3,246 | 2,773 | 3,169 | 9,188 |
| Balance | 8 | 50 | 24 | 74 | 332 | 24 | 973 | 747 | 943 | 2,663 |
| <i>Northern (SD)</i> | 30 | 134 | 174 | 308 | 1,396 | 68 | 4,219 | 3,520 | 4,112 | 11,851 |
| Cairns (C) | 23 | 297 | 307 | 604 | 2,237 | 85 | 11,054 | 9,133 | 8,588 | 28,775 |
| Douglas (S) | 23 | 88 | 241 | 329 | 1,346 | 66 | 6,581 | 4,634 | 3,478 | 14,693 |
| Mulgrave (S) — Parts A and B | 20 | 231 | 288 | 519 | 1,553 | 138 | 8,182 | 6,003 | 4,839 | 19,024 |
| Balance | 7 | 13 | 54 | 67 | 315 | 16 | 630 | 457 | 622 | 1,709 |
| <i>Far North (SD)</i> | 73 | 629 | 890 | 1,519 | 5,451 | 305 | 26,447 | 20,227 | 17,527 | 64,301 |
| <i>Balance of State</i> | 5 | 20 | 27 | 47 | 315 | 13 | 800 | 701 | 802 | 2,303 |
| <i>Queensland</i> | 611 | 3,512 | 13,096 | 16,608 | 66,574 | 2,160 | 319,650 | 273,319 | 308,982 | 901,951 |

(a) Employment numbers exclude real estate agents and their employees. (b) Brisbane City Core comprises the suburbs of Bowen Hills, City, Dutton Park, Fortitude Valley, Herston, Highgate Hill, Kangaroo Point, Kelvin Grove, Milton, New Farm, Newstead, Paddington, Red Hill, South Brisbane, Spring Hill, West End and Woolloongabba. (c) Redland (S) Balance comprises properties on North Stradbroke and Coochiemudlo islands. (d) Sunshine Coast Statistical District comprises the more urban coastal portions of Caloundra City and Maroochy and Noosa Shires.

AND SELECTED SUBDIVISIONS AND STATISTICAL LOCAL AREAS, QUEENSLAND, DECEMBER QUARTER 1993

| Unit occupancy rates (per cent) | | | | Unit lettings | | | | Average length of stay (days) | Takings from accommodation (\$'000) | | | |
|------------------------------------|------|------|-------------|---------------|--------|--------|-------------|-------------------------------------|--|--------|--------|-------------|
| Oct. | Nov. | Dec. | Dec. qtr | Oct. | Nov. | Dec. | Dec. qtr | Dec. qtr | Oct. | Nov. | Dec. | Dec. qtr |
| 72.6 | 66.6 | 60.7 | 66.6 | 265 | 205 | 252 | 722 | 8.4 | 168 | 150 | 156 | 474 |
| 66.2 | 63.2 | 68.4 | 66.0 | 224 | 180 | 251 | 655 | 6.9 | 70 | 69 | 85 | 223 |
| 69.9 | 65.7 | 64.0 | 66.3 | 489 | 385 | 503 | 1,377 | 7.7 | 238 | 218 | 240 | 697 |
| 57.4 | 48.5 | 55.3 | 53.8 | 587 | 447 | 514 | 1,548 | 5.9 | 225 | 185 | 218 | 627 |
| 63.4 | 56.5 | 59.5 | 59.8 | 1,076 | 832 | 1,017 | 2,925 | 6.8 | 463 | 403 | 458 | 1,324 |
| 49.9 | 48.9 | 72.3 | 57.1 | 898 | 890 | 1,158 | 2,946 | 5.1 | 146 | 143 | 241 | 530 |
| 52.5 | 47.9 | 49.5 | 50.0 | 77 | 79 | 70 | 226 | 8.5 | 24 | 19 | 30 | 73 |
| 57.1 | 52.8 | 64.2 | 58.1 | 2,051 | 1,801 | 2,245 | 6,097 | 6.0 | 633 | 565 | 729 | 1,927 |
| 68.2 | 47.6 | 57.1 | 57.7 | 430 | 341 | 406 | 1,177 | 4.9 | 177 | 108 | 158 | 443 |
| 64.6 | 58.2 | 60.3 | 61.1 | 2,818 | 2,350 | 2,592 | 7,760 | 4.8 | 876 | 722 | 982 | 2,580 |
| 65.2 | 54.8 | 63.6 | 61.2 | 2,437 | 1,938 | 2,128 | 6,503 | 7.8 | 958 | 781 | 1,200 | 2,939 |
| 69.9 | 65.2 | 70.6 | 68.6 | 2,335 | 1,987 | 2,142 | 6,464 | 9.1 | 1,010 | 864 | 1,136 | 3,010 |
| 60.3 | 49.4 | 62.8 | 57.6 | 546 | 440 | 1,191 | 2,177 | 4.5 | 193 | 125 | 251 | 568 |
| 61.9 | 60.1 | 58.4 | 60.2 | 93 | 75 | 98 | 266 | 10.4 | 32 | 33 | 44 | 109 |
| 56.5 | 44.9 | 49.3 | 50.3 | 621 | 493 | 580 | 1,694 | 6.2 | 283 | 240 | 399 | 921 |
| 66.1 | 51.2 | 63.3 | 60.3 | 713 | 546 | 651 | 1,910 | 9.8 | 259 | 177 | 324 | 760 |
| 61.9 | 46.8 | 52.6 | 53.9 | 180 | 149 | 193 | 522 | 6.4 | 51 | 39 | 62 | 152 |
| 58.5 | 48.7 | 61.2 | 56.2 | 1,088 | 670 | 969 | 2,727 | 7.2 | 389 | 293 | 467 | 1,149 |
| 73.0 | 68.4 | 65.6 | 69.0 | 14,400 | 13,181 | 13,117 | 40,698 | 5.8 | 5,148 | 4,651 | 5,864 | 15,664 |
| 65.6 | 49.7 | 66.3 | 60.7 | 685 | 485 | 690 | 1,860 | 7.6 | 219 | 172 | 311 | 702 |
| 61.6 | 49.7 | 58.3 | 56.6 | 247 | 199 | 244 | 690 | 5.8 | 87 | 67 | 111 | 264 |
| 68.7 | 61.5 | 64.4 | 64.9 | 26,593 | 22,854 | 25,001 | 74,448 | 6.4 | 9,681 | 8,271 | 11,309 | 29,262 |
| 53.5 | 52.5 | 68.8 | 58.4 | 2,060 | 1,731 | 2,762 | 6,553 | 9.4 | 628 | 504 | 1,144 | 2,276 |
| 52.4 | 48.2 | 62.1 | 54.3 | 3,788 | 3,300 | 3,836 | 10,924 | 7.0 | 1,213 | 976 | 1,873 | 4,062 |
| 63.8 | 54.4 | 61.3 | 59.9 | 7,160 | 6,136 | 6,281 | 19,577 | 5.8 | 2,508 | 2,041 | 2,848 | 7,397 |
| 57.6 | 52.0 | 63.4 | 57.7 | 13,008 | 11,167 | 12,879 | 37,054 | 6.8 | 4,349 | 3,520 | 5,865 | 13,734 |
| 58.1 | 54.0 | 57.1 | 56.4 | 1,261 | 1,070 | 1,252 | 3,583 | 6.4 | 376 | 340 | 488 | 1,205 |
| 64.3 | 57.8 | 63.8 | 62.0 | 40,862 | 35,091 | 39,132 | 115,085 | 6.5 | 14,406 | 12,131 | 17,663 | 44,201 |
| 47.6 | 31.4 | 39.9 | 39.8 | 1,251 | 837 | 1,019 | 3,107 | 5.7 | 212 | 156 | 287 | 655 |
| 44.1 | 39.7 | 39.5 | 41.1 | 114 | 102 | 128 | 344 | 7.0 | 28 | 22 | 46 | 96 |
| 40.9 | 32.0 | 45.5 | 39.6 | 187 | 159 | 170 | 516 | 5.3 | 31 | 16 | 44 | 92 |
| 46.5 | 32.3 | 40.6 | 39.9 | 1,552 | 1,098 | 1,317 | 3,967 | 5.7 | 270 | 194 | 378 | 842 |
| 61.4 | 50.3 | 57.0 | 56.3 | 677 | 565 | 620 | 1,862 | 2.7 | 81 | 62 | 76 | 219 |
| 58.5 | 47.3 | 61.6 | 55.9 | 714 | 625 | 690 | 2,029 | 3.2 | 151 | 108 | 149 | 408 |
| 59.0 | 52.1 | 63.8 | 58.4 | 352 | 293 | 309 | 954 | 4.3 | 75 | 49 | 58 | 182 |
| 58.7 | 49.1 | 62.4 | 56.8 | 1,066 | 918 | 999 | 2,983 | 3.6 | 226 | 157 | 208 | 591 |
| 33.1 | 24.2 | 33.7 | 30.4 | 306 | 282 | 322 | 910 | 4.3 | 73 | 51 | 78 | 203 |
| 63.4 | 72.0 | 67.1 | 67.5 | 163 | 168 | 162 | 493 | 7.1 | 55 | 58 | 64 | 177 |
| 61.0 | 48.7 | 46.2 | 52.0 | 129 | 116 | 115 | 360 | 4.9 | 52 | 41 | 40 | 133 |
| 44.7 | 39.5 | 43.7 | 42.7 | 598 | 566 | 599 | 1,763 | 5.2 | 181 | 150 | 182 | 513 |
| 42.4 | 33.6 | 41.1 | 39.1 | 305 | 226 | 245 | 776 | 3.4 | 42 | 30 | 43 | 115 |
| 44.2 | 38.1 | 43.1 | 41.8 | 903 | 792 | 844 | 2,539 | 4.7 | 223 | 180 | 225 | 628 |
| 59.0 | 50.4 | 45.9 | 51.8 | 2,176 | 1,922 | 1,802 | 5,900 | 4.9 | 723 | 583 | 611 | 1,918 |
| 64.5 | 47.0 | 34.1 | 48.5 | 1,171 | 815 | 747 | 2,733 | 5.4 | 551 | 374 | 299 | 1,224 |
| 50.9 | 38.6 | 30.1 | 39.8 | 1,863 | 1,465 | 1,274 | 4,602 | 4.1 | 920 | 754 | 622 | 2,296 |
| 30.3 | 22.7 | 29.9 | 27.7 | 241 | 145 | 202 | 588 | 2.9 | 51 | 31 | 47 | 128 |
| 56.2 | 44.4 | 37.2 | 45.9 | 5,451 | 4,347 | 4,025 | 13,823 | 4.6 | 2,245 | 1,742 | 1,579 | 5,566 |
| 54.9 | 49.7 | 55.0 | 53.3 | 383 | 356 | 357 | 1,096 | 2.1 | 37 | 31 | 36 | 105 |
| 62.1 | 54.9 | 60.0 | 59.1 | 52,945 | 44,968 | 49,539 | 147,452 | 6.1 | 18,121 | 15,063 | 20,893 | 54,078 |

TABLE 10 — CARAVAN PARKS BY STATISTICAL DIVISION, QUEENSLAND

| Particulars | Brisbane (SD) | | | Moreton (SD) | | | Wide Bay-Burnett (SD) | | |
|--|---------------|----------------|----------------|----------------|----------------|----------------|-----------------------|----------------|----------------|
| | Short-term | Long-term | Total | Short-term | Long-term | Total | Short-term | Long-term | Total |
| ESTABLISHMENTS, CAPACITY AND EMPLOYMENT | | | | | | | | | |
| <i>December quarter 1992—</i> | | | | | | | | | |
| Establishments | 9 | 68 | 77 | 36 | 77 | 113 | 34 | 60 | 94 |
| Capacity | | | | | | | | | |
| On-site vans | 102 | 1,176 | 1,278 | 145 | 1,021 | 1,166 | 182 | 508 | 690 |
| Other powered sites | 275 | 5,263 | 5,538 | 3,239 | 5,151 | 8,390 | 2,245 | 2,570 | 4,815 |
| Unpowered sites | 1,114 | 449 | 1,563 | 2,224 | 1,013 | 3,237 | 1,171 | 807 | 1,978 |
| Cabins, flats, etc. | 32 | 476 | 508 | 192 | 558 | 750 | 143 | 266 | 409 |
| <i>Total capacity</i> | <i>1,523</i> | <i>7,364</i> | <i>8,887</i> | <i>5,800</i> | <i>7,743</i> | <i>13,543</i> | <i>3,741</i> | <i>4,151</i> | <i>7,892</i> |
| Sites occupied by long-term guests | 164 | 4,923 | 5,087 | 573 | 3,893 | 4,466 | 305 | 1,365 | 1,670 |
| Other sites permanently reserved | 166 | 63 | 229 | 204 | 315 | 519 | 71 | 132 | 203 |
| Employment (persons) | 33 | 342 | 375 | 176 | 316 | 492 | 100 | 174 | 274 |
| <i>December quarter 1993—</i> | | | | | | | | | |
| Establishments | 9 | 68 | 77 | 33 | 78 | 111 | 35 | 60 | 95 |
| Capacity | | | | | | | | | |
| On-site vans | 42 | 1,302 | 1,344 | 101 | 1,066 | 1,167 | 170 | 513 | 683 |
| Other powered sites | 266 | 5,203 | 5,469 | 3,164 | 5,250 | 8,414 | 2,276 | 2,529 | 4,805 |
| Unpowered sites | 1,023 | 445 | 1,468 | 1,903 | 1,236 | 3,139 | 1,218 | 734 | 1,952 |
| Cabins, flats, etc. | 28 | 495 | 523 | 211 | 558 | 769 | 178 | 257 | 435 |
| <i>Total capacity</i> | <i>1,359</i> | <i>7,445</i> | <i>8,804</i> | <i>5,379</i> | <i>8,110</i> | <i>13,489</i> | <i>3,842</i> | <i>4,033</i> | <i>7,875</i> |
| Sites occupied by long-term guests | 92 | 4,933 | 5,025 | 473 | 3,876 | 4,349 | 357 | 1,306 | 1,663 |
| Other sites permanently reserved | 174 | 57 | 231 | 284 | 243 | 527 | 130 | 84 | 214 |
| Employment (persons) | 24 | 291 | 315 | 170 | 319 | 489 | 105 | 175 | 280 |
| SITE NIGHTS OCCUPIED | | | | | | | | | |
| <i>December quarter 1992</i> | <i>43,163</i> | <i>499,114</i> | <i>542,277</i> | <i>203,525</i> | <i>447,662</i> | <i>651,187</i> | <i>98,814</i> | <i>167,593</i> | <i>266,407</i> |
| <i>1993—</i> | | | | | | | | | |
| October | 13,214 | 167,677 | 180,891 | 60,890 | 148,210 | 209,100 | 34,741 | 56,646 | 91,387 |
| November | 11,672 | 162,037 | 173,709 | 52,261 | 142,374 | 194,635 | 29,913 | 53,068 | 82,981 |
| December | 17,306 | 166,696 | 184,002 | 82,479 | 157,805 | 240,284 | 42,617 | 57,125 | 99,742 |
| <i>December quarter 1993</i> | <i>42,192</i> | <i>496,410</i> | <i>538,602</i> | <i>195,630</i> | <i>448,389</i> | <i>644,019</i> | <i>107,271</i> | <i>166,839</i> | <i>274,110</i> |
| SITE OCCUPANCY RATES (per cent) | | | | | | | | | |
| <i>December quarter 1992</i> | <i>32.6</i> | <i>73.7</i> | <i>67.0</i> | <i>38.1</i> | <i>62.8</i> | <i>52.3</i> | <i>29.0</i> | <i>43.9</i> | <i>36.9</i> |
| <i>1993—</i> | | | | | | | | | |
| October | 33.7 | 72.7 | 67.0 | 36.5 | 59.0 | 50.0 | 29.2 | 45.3 | 37.4 |
| November | 28.6 | 72.5 | 65.8 | 32.4 | 58.5 | 48.1 | 26.0 | 43.9 | 35.1 |
| December | 41.1 | 72.2 | 67.4 | 49.5 | 62.8 | 57.5 | 35.8 | 45.7 | 40.9 |
| <i>December quarter 1993</i> | <i>34.6</i> | <i>72.5</i> | <i>66.7</i> | <i>39.5</i> | <i>60.1</i> | <i>51.9</i> | <i>30.3</i> | <i>45.0</i> | <i>37.8</i> |
| TAKINGS FROM ACCOMMODATION (\$'000) | | | | | | | | | |
| <i>December quarter 1992</i> | <i>375</i> | <i>4,449</i> | <i>4,823</i> | <i>2,392</i> | <i>4,315</i> | <i>6,707</i> | <i>993</i> | <i>1,453</i> | <i>2,446</i> |
| <i>1993—</i> | | | | | | | | | |
| October | 101 | 1,531 | 1,631 | 780 | 1,479 | 2,259 | 367 | 503 | 870 |
| November | 103 | 1,459 | 1,562 | 775 | 1,371 | 2,146 | 304 | 441 | 745 |
| December | 166 | 1,558 | 1,725 | 962 | 1,764 | 2,726 | 493 | 498 | 991 |
| <i>December quarter 1993</i> | <i>370</i> | <i>4,548</i> | <i>4,918</i> | <i>2,517</i> | <i>4,614</i> | <i>7,131</i> | <i>1,163</i> | <i>1,441</i> | <i>2,605</i> |

TABLE 10 — CARAVAN PARKS BY STATISTICAL DIVISION, QUEENSLAND—continued

| Particulars | Darling Downs (SD) | | | South-West (SD) | | | Fitzroy (SD) | | |
|--|--------------------|---------------|---------------|-----------------|---------------|---------------|---------------|----------------|----------------|
| | Short-term | Long-term | Total | Short-term | Long-term | Total | Short-term | Long-term | Total |
| ESTABLISHMENTS, CAPACITY AND EMPLOYMENT | | | | | | | | | |
| <i>December quarter 1992</i> | | | | | | | | | |
| Establishments | 14 | 29 | 43 | 9 | 9 | 18 | 31 | 38 | 69 |
| Capacity | | | | | | | | | |
| On-site vans | 92 | 261 | 353 | 32 | 57 | 89 | 88 | 511 | 599 |
| Other powered sites | 334 | 807 | 1,141 | 140 | 230 | 370 | 942 | 2,064 | 3,006 |
| Unpowered sites | 441 | 406 | 847 | 384 | 80 | 464 | 684 | 450 | 1,134 |
| Cabins, flats, etc. | 44 | 79 | 123 | 20 | 13 | 33 | 126 | 218 | 344 |
| <i>Total capacity</i> | <i>911</i> | <i>1,553</i> | <i>2,464</i> | <i>576</i> | <i>380</i> | <i>956</i> | <i>1,840</i> | <i>3,243</i> | <i>5,083</i> |
| Sites occupied by long-term guests | 64 | 424 | 488 | 9 | 97 | 106 | 168 | 1,142 | 1,310 |
| Other sites permanently reserved | — | 7 | 7 | 5 | 2 | 7 | 26 | 49 | 75 |
| Employment (persons) | 30 | 68 | 98 | 23 | 15 | 38 | 96 | 154 | 250 |
| <i>December quarter 1993—</i> | | | | | | | | | |
| Establishments | 12 | 31 | 43 | 7 | 10 | 17 | 34 | 37 | 71 |
| Capacity | | | | | | | | | |
| On-site vans | 84 | 253 | 337 | 25 | 56 | 81 | 122 | 480 | 602 |
| Other powered sites | 294 | 911 | 1,205 | 129 | 235 | 364 | 1,089 | 1,978 | 3,067 |
| Unpowered sites | 384 | 430 | 814 | 377 | 85 | 462 | 777 | 410 | 1,187 |
| Cabins, flats, etc. | 48 | 89 | 137 | 2 | 17 | 19 | 145 | 241 | 386 |
| <i>Total capacity</i> | <i>810</i> | <i>1,683</i> | <i>2,493</i> | <i>533</i> | <i>393</i> | <i>926</i> | <i>2,133</i> | <i>3,109</i> | <i>5,242</i> |
| Sites occupied by long-term guests | 53 | 435 | 488 | 8 | 90 | 98 | 212 | 1,123 | 1,335 |
| Other sites permanently reserved | 11 | 11 | 22 | — | 4 | 4 | 26 | 34 | 60 |
| Employment (persons) | 27 | 69 | 96 | 18 | 15 | 33 | 112 | 143 | 255 |
| SITE NIGHTS OCCUPIED | | | | | | | | | |
| <i>December quarter 1992</i> | <i>13,517</i> | <i>54,572</i> | <i>68,089</i> | <i>3,949</i> | <i>10,926</i> | <i>14,875</i> | <i>37,258</i> | <i>142,921</i> | <i>180,179</i> |
| <i>1993—</i> | | | | | | | | | |
| October | 4,080 | 17,882 | 21,962 | 1,262 | 3,689 | 4,951 | 17,236 | 44,005 | 61,241 |
| November | 3,619 | 16,657 | 20,276 | 867 | 3,564 | 4,431 | 14,620 | 42,515 | 57,135 |
| December | 3,790 | 16,674 | 20,464 | 808 | 3,461 | 4,269 | 16,423 | 43,846 | 60,269 |
| <i>December quarter 1993</i> | <i>11,489</i> | <i>51,213</i> | <i>62,702</i> | <i>2,937</i> | <i>10,714</i> | <i>13,651</i> | <i>48,279</i> | <i>130,366</i> | <i>178,645</i> |
| SITE OCCUPANCY RATES (per cent) | | | | | | | | | |
| <i>December quarter 1992</i> | <i>16.1</i> | <i>38.2</i> | <i>30.0</i> | <i>7.5</i> | <i>31.3</i> | <i>16.9</i> | <i>22.0</i> | <i>47.9</i> | <i>38.5</i> |
| <i>1993—</i> | | | | | | | | | |
| October | 16.2 | 34.3 | 28.4 | 7.6 | 30.3 | 17.2 | 26.1 | 45.7 | 37.7 |
| November | 14.9 | 33.0 | 27.1 | 5.4 | 30.2 | 16.0 | 22.8 | 45.6 | 36.3 |
| December | 15.1 | 32.0 | 26.5 | 4.9 | 28.4 | 14.9 | 24.8 | 45.5 | 37.1 |
| <i>December quarter 1993</i> | <i>15.4</i> | <i>33.1</i> | <i>27.3</i> | <i>6.0</i> | <i>29.6</i> | <i>16.0</i> | <i>24.6</i> | <i>45.6</i> | <i>37.0</i> |
| TAKINGS FROM ACCOMMODATION (\$'000) | | | | | | | | | |
| <i>December quarter 1992</i> | <i>136</i> | <i>468</i> | <i>604</i> | <i>47</i> | <i>92</i> | <i>139</i> | <i>450</i> | <i>1,256</i> | <i>1,706</i> |
| <i>1993—</i> | | | | | | | | | |
| October | 43 | 167 | 210 | 11 | 30 | 41 | 195 | 403 | 598 |
| November | 35 | 152 | 187 | 6 | 31 | 36 | 165 | 388 | 553 |
| December | 44 | 160 | 204 | 6 | 29 | 35 | 197 | 430 | 626 |
| <i>December quarter 1993</i> | <i>122</i> | <i>478</i> | <i>600</i> | <i>23</i> | <i>89</i> | <i>112</i> | <i>557</i> | <i>1,221</i> | <i>1,778</i> |

TABLE 10—CARAVAN PARKS BY STATISTICAL DIVISION, QUEENSLAND *continued*

| Particulars | Central-West (SD) | | | Mackay (SD) | | | Northern (SD) | | |
|--|-------------------|-----------|--------------|---------------|---------------|----------------|---------------|---------------|----------------|
| | Short-term | Long-term | Total | Short-term | Long-term | Total | Short-term | Long-term | Total |
| ESTABLISHMENTS, CAPACITY AND EMPLOYMENT | | | | | | | | | |
| <i>December quarter 1992—</i> | | | | | | | | | |
| Establishments | 9 | — | 9 | 15 | 30 | 45 | 14 | 29 | 43 |
| Capacity | | | | | | | | | |
| On-site vans | 53 | — | 53 | 113 | 250 | 363 | 130 | 305 | 435 |
| Other powered sites | 273 | — | 273 | 474 | 1,684 | 2,158 | 662 | 1,416 | 2,078 |
| Unpowered sites | 249 | — | 249 | 232 | 477 | 709 | 314 | 419 | 733 |
| Cabins, flats, etc. | 42 | — | 42 | 120 | 107 | 227 | 60 | 149 | 209 |
| <i>Total capacity</i> | <i>617</i> | <i>—</i> | <i>617</i> | <i>939</i> | <i>2,518</i> | <i>3,457</i> | <i>1,166</i> | <i>2,289</i> | <i>3,455</i> |
| Sites occupied by long-term guests | 13 | — | 13 | 73 | 796 | 869 | 100 | 809 | 909 |
| Other sites permanently reserved | 5 | — | 5 | — | 7 | 7 | 10 | 38 | 48 |
| Employment (persons) | 22 | — | 22 | 58 | 82 | 140 | 50 | 97 | 147 |
| <i>December quarter 1993—</i> | | | | | | | | | |
| Establishments | 10 | — | 10 | 17 | 28 | 45 | 15 | 29 | 44 |
| Capacity | | | | | | | | | |
| On-site vans | 53 | — | 53 | 120 | 239 | 359 | 122 | 262 | 384 |
| Other powered sites | 304 | — | 304 | 500 | 1,678 | 2,178 | 646 | 1,498 | 2,144 |
| Unpowered sites | 411 | — | 411 | 250 | 446 | 696 | 259 | 516 | 775 |
| Cabins, flats, etc. | 42 | — | 42 | 132 | 118 | 250 | 79 | 129 | 208 |
| <i>Total capacity</i> | <i>810</i> | <i>—</i> | <i>810</i> | <i>1,002</i> | <i>2,481</i> | <i>3,483</i> | <i>1,106</i> | <i>2,405</i> | <i>3,511</i> |
| Sites occupied by long-term guests | 23 | — | 23 | 69 | 735 | 804 | 124 | 802 | 926 |
| Other sites permanently reserved | 4 | — | 4 | 11 | 6 | 17 | 6 | 13 | 19 |
| Employment (persons) | 21 | — | 21 | 60 | 81 | 141 | 63 | 102 | 165 |
| SITE NIGHTS OCCUPIED | | | | | | | | | |
| <i>December quarter 1992</i> | <i>6,154</i> | <i>—</i> | <i>6,154</i> | <i>24,840</i> | <i>91,135</i> | <i>115,975</i> | <i>31,458</i> | <i>98,004</i> | <i>129,462</i> |
| <i>1993—</i> | | | | | | | | | |
| October | 2,429 | — | 2,429 | 10,173 | 28,745 | 38,918 | 10,997 | 34,361 | 45,358 |
| November | 1,661 | — | 1,661 | 8,009 | 26,809 | 34,818 | 9,184 | 31,277 | 40,461 |
| December | 1,737 | — | 1,737 | 10,436 | 27,248 | 37,684 | 9,332 | 30,186 | 39,518 |
| <i>December quarter 1993</i> | <i>5,827</i> | <i>—</i> | <i>5,827</i> | <i>28,618</i> | <i>82,802</i> | <i>111,420</i> | <i>29,513</i> | <i>95,824</i> | <i>125,337</i> |
| SITE OCCUPANCY RATES (per cent) | | | | | | | | | |
| <i>December quarter 1992</i> | <i>10.8</i> | <i>—</i> | <i>10.8</i> | <i>28.8</i> | <i>39.3</i> | <i>36.5</i> | <i>29.3</i> | <i>46.5</i> | <i>40.7</i> |
| <i>1993—</i> | | | | | | | | | |
| October | 9.7 | — | 9.7 | 32.8 | 37.4 | 36.0 | 32.1 | 46.1 | 41.7 |
| November | 6.8 | — | 6.8 | 26.6 | 36.0 | 33.3 | 27.7 | 43.3 | 38.4 |
| December | 6.9 | — | 6.9 | 33.6 | 35.4 | 34.9 | 27.2 | 40.5 | 36.3 |
| <i>December quarter 1993</i> | <i>7.8</i> | <i>—</i> | <i>7.8</i> | <i>31.0</i> | <i>36.3</i> | <i>34.8</i> | <i>29.0</i> | <i>43.3</i> | <i>38.8</i> |
| TAKINGS FROM ACCOMMODATION (\$'000) | | | | | | | | | |
| <i>December quarter 1992</i> | <i>106</i> | <i>—</i> | <i>106</i> | <i>363</i> | <i>815</i> | <i>1,178</i> | <i>350</i> | <i>951</i> | <i>1,302</i> |
| <i>1993—</i> | | | | | | | | | |
| October | 38 | — | 38 | 164 | 264 | 428 | 148 | 328 | 477 |
| November | 25 | — | 25 | 137 | 240 | 378 | 121 | 295 | 416 |
| December | 29 | — | 29 | 169 | 243 | 412 | 127 | 289 | 417 |
| <i>December quarter 1993</i> | <i>91</i> | <i>—</i> | <i>91</i> | <i>470</i> | <i>748</i> | <i>1,218</i> | <i>397</i> | <i>913</i> | <i>1,309</i> |

TABLE 10 — CARAVAN PARKS BY STATISTICAL DIVISION, QUEENSLAND—continued

| Particulars | Far North (SD) | | | North-West (SD) | | | Queensland | | |
|--|----------------|----------------|----------------|-----------------|---------------|---------------|----------------|------------------|------------------|
| | Short-term | Long-term | Total | Short-term | Long-term | Total | Short-term | Long-term | Total |
| ESTABLISHMENTS, CAPACITY AND EMPLOYMENT | | | | | | | | | |
| <i>December quarter 1992—</i> | | | | | | | | | |
| Establishments | 45 | 48 | 93 | 10 | 11 | 21 | 226 | 399 | 625 |
| Capacity | | | | | | | | | |
| On-site vans | 203 | 440 | 643 | 17 | 84 | 101 | 1,157 | 4,613 | 5,770 |
| Other powered sites | 1,706 | 2,018 | 3,724 | 341 | 614 | 955 | 10,631 | 21,817 | 32,448 |
| Unpowered sites | 1,434 | 1,005 | 2,439 | 245 | 129 | 374 | 8,492 | 5,235 | 13,727 |
| Cabins, flats, etc. | 265 | 312 | 577 | 39 | 16 | 55 | 1,083 | 2,194 | 3,277 |
| <i>Total capacity</i> | <i>3,608</i> | <i>3,775</i> | <i>7,383</i> | <i>642</i> | <i>843</i> | <i>1,485</i> | <i>21,363</i> | <i>33,859</i> | <i>55,222</i> |
| Sites occupied by long-term guests | 292 | 1,065 | 1,357 | 34 | 356 | 390 | 1,795 | 14,870 | 16,665 |
| Other sites permanently reserved | 28 | 63 | 91 | — | — | — | 515 | 676 | 1,191 |
| Employment (persons) | 162 | 157 | 319 | 24 | 23 | 47 | 774 | 1,428 | 2,202 |
| <i>December quarter 1993—</i> | | | | | | | | | |
| Establishments | 46 | 46 | 92 | 13 | 11 | 24 | 231 | 398 | 629 |
| Capacity | | | | | | | | | |
| On-site vans | 211 | 487 | 698 | 30 | 70 | 100 | 1,080 | 4,728 | 5,808 |
| Other powered sites | 1,734 | 1,906 | 3,640 | 390 | 647 | 1,037 | 10,792 | 21,835 | 32,627 |
| Unpowered sites | 1,486 | 878 | 2,364 | 302 | 233 | 535 | 8,390 | 5,413 | 13,803 |
| Cabins, flats, etc. | 303 | 315 | 618 | 39 | 18 | 57 | 1,207 | 2,237 | 3,444 |
| <i>Total capacity</i> | <i>3,734</i> | <i>3,586</i> | <i>7,320</i> | <i>761</i> | <i>968</i> | <i>1,729</i> | <i>21,469</i> | <i>34,213</i> | <i>55,682</i> |
| Sites occupied by long-term guests | 302 | 1,053 | 1,355 | 39 | 334 | 373 | 1,752 | 14,687 | 16,439 |
| Other sites permanently reserved | 38 | 50 | 88 | — | — | — | 684 | 502 | 1,186 |
| Employment (persons) | 175 | 154 | 329 | 36 | 23 | 59 | 811 | 1,372 | 2,183 |
| SITE NIGHTS OCCUPIED | | | | | | | | | |
| <i>December quarter 1992</i> | <i>78,860</i> | <i>137,547</i> | <i>216,407</i> | <i>6,409</i> | <i>38,547</i> | <i>44,956</i> | <i>547,947</i> | <i>1,688,021</i> | <i>2,235,968</i> |
| <i>1993—</i> | | | | | | | | | |
| October | 34,021 | 48,927 | 82,948 | 3,768 | 13,030 | 16,798 | 192,811 | 563,172 | 755,983 |
| November | 26,078 | 45,220 | 71,298 | 2,822 | 12,009 | 14,831 | 160,706 | 535,530 | 696,236 |
| December | 24,726 | 45,920 | 70,646 | 2,182 | 11,468 | 13,650 | 211,836 | 560,429 | 772,265 |
| <i>December quarter 1993</i> | <i>84,825</i> | <i>140,067</i> | <i>224,892</i> | <i>8,772</i> | <i>36,507</i> | <i>45,279</i> | <i>565,353</i> | <i>1,659,131</i> | <i>2,224,484</i> |
| SITE OCCUPANCY RATES (per cent) | | | | | | | | | |
| <i>December quarter 1992</i> | <i>23.8</i> | <i>39.6</i> | <i>31.9</i> | <i>10.9</i> | <i>49.7</i> | <i>32.9</i> | <i>28.0</i> | <i>54.2</i> | <i>44.1</i> |
| <i>1993—</i> | | | | | | | | | |
| October | 29.4 | 44.0 | 36.6 | 16.0 | 43.4 | 31.3 | 29.1 | 53.1 | 43.9 |
| November | 23.3 | 42.0 | 32.5 | 12.4 | 41.4 | 28.6 | 25.0 | 52.2 | 41.7 |
| December | 21.4 | 41.3 | 31.1 | 9.2 | 38.2 | 25.5 | 31.8 | 52.8 | 44.7 |
| <i>December quarter 1993</i> | <i>24.7</i> | <i>42.5</i> | <i>33.4</i> | <i>12.5</i> | <i>41.0</i> | <i>28.5</i> | <i>28.7</i> | <i>52.7</i> | <i>43.4</i> |
| TAKINGS FROM ACCOMMODATION (\$'000) | | | | | | | | | |
| <i>December quarter 1992</i> | <i>948</i> | <i>1,437</i> | <i>2,385</i> | <i>70</i> | <i>405</i> | <i>476</i> | <i>6,230</i> | <i>15,642</i> | <i>21,873</i> |
| <i>1993—</i> | | | | | | | | | |
| October | 466 | 543 | 1,008 | 41 | 134 | 175 | 2,354 | 5,381 | 7,735 |
| November | 343 | 493 | 837 | 32 | 116 | 148 | 2,045 | 4,986 | 7,031 |
| December | 336 | 522 | 858 | 24 | 119 | 143 | 2,553 | 5,611 | 8,165 |
| <i>December quarter 1993</i> | <i>1,145</i> | <i>1,557</i> | <i>2,703</i> | <i>97</i> | <i>369</i> | <i>466</i> | <i>6,953</i> | <i>15,979</i> | <i>22,931</i> |

TABLE 11 — CARAVAN PARKS: STATISTICAL DIVISIONS AND SELECTED SUBDIVISIONS

| Statistical Divisions and Selected Subdivisions and Statistical Local Areas | Capacity | | | | | Total | Sites occupied by long-term guests | Other sites permanently reserved | Employment (persons) |
|---|----------------|--------------|---------------------|-----------------|---------------------|---------------|------------------------------------|----------------------------------|----------------------|
| | Establishments | On-site vans | Other powered sites | Unpowered sites | Cabins, flats, etc. | | | | |
| Brisbane City (SSD) | | | | | | | | | |
| Aspley | 3 | 89 | 410 | 2 | 71 | 572 | 374 | — | 29 |
| Eight Mile Plains | 4 | 216 | 424 | 35 | 58 | 733 | 431 | 22 | 27 |
| Balance | 18 | 329 | 1,904 | 40 | 97 | 2,370 | 1,525 | 2 | 88 |
| <i>Total</i> | <i>25</i> | <i>634</i> | <i>2,738</i> | <i>77</i> | <i>226</i> | <i>3,675</i> | <i>2,330</i> | <i>24</i> | <i>144</i> |
| Beenleigh | 4 | 30 | 348 | 34 | 15 | 427 | 265 | — | 18 |
| Caboolture (S) — Part A | 5 | 138 | 359 | 23 | 10 | 530 | 375 | 1 | 12 |
| Ipswich (C) | 5 | 120 | 274 | 20 | 45 | 459 | 310 | — | 20 |
| Logan City (SSD) | 12 | 259 | 694 | 80 | 114 | 1,147 | 857 | 3 | 49 |
| Redcliffe City (SSD) | 10 | 53 | 351 | 34 | 23 | 461 | 322 | 5 | 31 |
| Redland Shire (SSD) | 13 | 75 | 470 | 1,180 | 47 | 1,772 | 294 | 198 | 32 |
| Balance | 3 | 35 | 235 | 20 | 43 | 333 | 272 | — | 9 |
| <i>Brisbane (SD)</i> | <i>77</i> | <i>1,344</i> | <i>5,469</i> | <i>1,468</i> | <i>523</i> | <i>8,804</i> | <i>5,025</i> | <i>231</i> | <i>315</i> |
| Beaudesert (S) — Part B | 4 | 27 | 130 | 132 | 21 | 310 | 71 | — | 25 |
| Caboolture (S) — Part B | 8 | 49 | 857 | 45 | 39 | 990 | 466 | 141 | 38 |
| Caloundra (C) — Parts A and B | 17 | 109 | 843 | 348 | 123 | 1,423 | 509 | 98 | 58 |
| Esk (S) | 4 | 27 | 139 | 160 | 9 | 335 | 37 | 1 | 8 |
| Gatton (S) | 3 | 63 | 173 | 42 | 5 | 283 | 49 | — | 6 |
| Gold Coast City (SSD) | | | | | | | | | |
| Labrador | 4 | 69 | 381 | 205 | 52 | 707 | 259 | — | 25 |
| Balance | 17 | 214 | 2,564 | 326 | 154 | 3,258 | 1,214 | 118 | 90 |
| <i>Total</i> | <i>21</i> | <i>283</i> | <i>2,945</i> | <i>531</i> | <i>206</i> | <i>3,965</i> | <i>1,473</i> | <i>118</i> | <i>115</i> |
| Maroochy (S) — Parts A and B | 25 | 198 | 1,803 | 494 | 194 | 2,689 | 720 | 102 | 108 |
| Noosa (S) — Parts A and B | 12 | 78 | 475 | 791 | 82 | 1,426 | 152 | 55 | 69 |
| Balance | 17 | 333 | 1,049 | 596 | 90 | 2,068 | 872 | 12 | 62 |
| <i>Moreton (SD)</i> | <i>111</i> | <i>1,167</i> | <i>8,414</i> | <i>3,139</i> | <i>769</i> | <i>13,489</i> | <i>4,349</i> | <i>527</i> | <i>489</i> |
| Bundaberg (C) | 7 | 105 | 440 | 9 | 102 | 656 | 283 | 18 | 17 |
| Gooburrum (S) — Parts A and B | 3 | 15 | 166 | 151 | 18 | 350 | 73 | 2 | 6 |
| Gympie (C) and Widgee (S) | 10 | 92 | 577 | 389 | 45 | 1,103 | 138 | 46 | 39 |
| Hervey Bay (C) | 25 | 171 | 1,767 | 362 | 139 | 2,439 | 630 | 54 | 86 |
| Isis (S) | 3 | 30 | 144 | 14 | 17 | 205 | 48 | 6 | 14 |
| Maryborough (C) | 9 | 60 | 273 | 181 | 35 | 549 | 168 | 15 | 22 |
| Miriam Vale (S) | 6 | 28 | 202 | 97 | 26 | 353 | 27 | 45 | 19 |
| Nanango (S) | 5 | 55 | 125 | 24 | 11 | 215 | 34 | 4 | 9 |
| Woongarra (S) — Parts A and B | 7 | 32 | 622 | 292 | 10 | 956 | 171 | 6 | 21 |
| Balance | 20 | 95 | 489 | 433 | 32 | 1,049 | 91 | 18 | 47 |
| <i>Wide Bay-Burnett (SD)</i> | <i>95</i> | <i>683</i> | <i>4,805</i> | <i>1,952</i> | <i>435</i> | <i>7,875</i> | <i>1,663</i> | <i>214</i> | <i>280</i> |
| Goondiwindi (T) | 3 | 25 | 90 | 20 | 31 | 166 | 49 | — | 6 |
| Inglewood (S) | 5 | 17 | 105 | 29 | 8 | 159 | 11 | 1 | 8 |
| Toowoomba (C) | 5 | 64 | 271 | 46 | 24 | 405 | 187 | — | 21 |
| Warwick (C) | 3 | 35 | 90 | 126 | 29 | 280 | 25 | 4 | 7 |
| Balance | 27 | 196 | 649 | 593 | 45 | 1,483 | 216 | 17 | 54 |
| <i>Darling Downs (SD)</i> | <i>43</i> | <i>337</i> | <i>1,205</i> | <i>814</i> | <i>137</i> | <i>2,493</i> | <i>488</i> | <i>22</i> | <i>96</i> |
| Murweh (S) | 4 | 24 | 94 | 342 | 2 | 462 | 6 | — | 11 |
| Roma (T) | 3 | 32 | 89 | 40 | 8 | 169 | 57 | 4 | 6 |
| Balance | 10 | 25 | 181 | 80 | 9 | 295 | 35 | — | 16 |
| <i>South-West (SD)</i> | <i>17</i> | <i>81</i> | <i>364</i> | <i>462</i> | <i>19</i> | <i>926</i> | <i>98</i> | <i>4</i> | <i>33</i> |

AND STATISTICAL LOCAL AREAS, QUEENSLAND, DECEMBER QUARTER 1993

| <i>Site nights occupied</i> | | | | <i>Site occupancy rates (per cent)</i> | | | | <i>Takings from accommodation (\$ '000)</i> | | | |
|-----------------------------|-------------|-------------|---------------------|--|-------------|-------------|---------------------|---|-------------|-------------|---------------------|
| <i>Oct.</i> | <i>Nov.</i> | <i>Dec.</i> | <i>Dec. qtr</i> | <i>Oct.</i> | <i>Nov.</i> | <i>Dec.</i> | <i>Dec. qtr</i> | <i>Oct.</i> | <i>Nov.</i> | <i>Dec.</i> | <i>Dec. qtr</i> |
| 13,291 | 12,393 | 13,212 | 38,896 | 75.0 | 72.2 | 74.5 | 73.9 | 143 | 136 | 143 | 422 |
| 16,257 | 15,694 | 16,311 | 48,262 | 71.5 | 71.4 | 71.8 | 71.6 | 173 | 175 | 183 | 531 |
| 52,246 | 50,673 | 52,036 | 154,955 | 71.1 | 71.3 | 70.8 | 71.1 | 513 | 485 | 536 | 1,534 |
| 81,794 | 78,760 | 81,559 | 242,113 | 71.8 | 71.4 | 71.6 | 71.6 | 829 | 796 | 862 | 2,487 |
| 9,553 | 8,775 | 9,151 | 27,479 | 72.2 | 68.5 | 69.1 | 69.9 | 67 | 58 | 59 | 183 |
| 12,341 | 11,703 | 12,035 | 36,079 | 75.1 | 73.6 | 73.3 | 74.0 | 116 | 105 | 117 | 338 |
| 10,329 | 10,015 | 10,313 | 30,657 | 72.6 | 72.7 | 72.5 | 72.6 | 86 | 81 | 86 | 253 |
| 28,497 | 27,718 | 28,327 | 84,542 | 80.1 | 80.6 | 79.7 | 80.1 | 237 | 222 | 235 | 694 |
| 11,314 | 11,087 | 11,451 | 33,852 | 79.2 | 80.2 | 80.1 | 79.8 | 88 | 89 | 93 | 270 |
| 18,665 | 17,383 | 22,449 | 58,497 | 35.9 | 32.7 | 40.9 | 36.5 | 136 | 143 | 199 | 479 |
| 8,398 | 8,268 | 8,717 | 25,383 | 81.4 | 82.8 | 84.4 | 82.9 | 72 | 68 | 74 | 213 |
| 180,891 | 173,709 | 184,002 | 538,602 | 67.0 | 65.8 | 67.4 | 66.7 | 1,631 | 1,562 | 1,725 | 4,918 |
| 3,783 | 3,171 | 4,040 | 10,994 | 39.4 | 34.1 | 42.0 | 38.5 | 39 | 37 | 46 | 122 |
| 21,613 | 20,029 | 22,471 | 64,113 | 70.4 | 67.4 | 73.2 | 70.4 | 193 | 190 | 246 | 629 |
| 25,244 | 23,325 | 29,105 | 77,674 | 57.2 | 54.6 | 66.0 | 59.3 | 245 | 223 | 337 | 805 |
| 1,734 | 1,546 | 1,794 | 5,074 | 16.7 | 15.4 | 17.3 | 16.5 | 15 | 11 | 14 | 40 |
| 1,601 | 1,889 | 1,536 | 5,026 | 18.2 | 22.2 | 17.5 | 19.3 | 14 | 13 | 14 | 42 |
| 11,029 | 10,105 | 12,251 | 33,385 | 50.3 | 47.6 | 55.9 | 51.3 | 159 | 113 | 203 | 475 |
| 55,065 | 50,123 | 63,286 | 168,474 | 54.5 | 51.3 | 62.7 | 56.2 | 600 | 527 | 671 | 1,797 |
| 66,094 | 60,228 | 75,537 | 201,859 | 53.8 | 50.6 | 61.5 | 55.3 | 759 | 639 | 874 | 2,272 |
| 43,923 | 41,026 | 53,071 | 138,020 | 52.7 | 50.9 | 63.7 | 55.8 | 500 | 570 | 602 | 1,673 |
| 13,818 | 13,306 | 19,528 | 46,652 | 31.3 | 31.1 | 44.2 | 35.6 | 187 | 169 | 263 | 619 |
| 31,290 | 30,115 | 33,202 | 94,607 | 48.8 | 48.5 | 51.8 | 49.7 | 308 | 294 | 328 | 929 |
| 209,100 | 194,635 | 240,284 | 644,019 | 50.0 | 48.1 | 57.5 | 51.9 | 2,259 | 2,146 | 2,726 | 7,131 |
| 13,141 | 12,510 | 12,981 | 38,632 | 64.6 | 63.6 | 63.8 | 64.0 | 130 | 118 | 132 | 379 |
| 7,308 | 7,077 | 8,143 | 22,528 | 67.4 | 67.4 | 75.1 | 70.0 | 37 | 35 | 44 | 115 |
| 10,581 | 9,303 | 11,734 | 31,618 | 30.9 | 28.1 | 34.3 | 31.2 | 95 | 78 | 98 | 270 |
| 31,993 | 27,675 | 35,812 | 95,480 | 42.3 | 37.8 | 47.4 | 42.6 | 324 | 261 | 391 | 976 |
| 3,386 | 3,000 | 3,190 | 9,576 | 53.3 | 48.8 | 50.2 | 50.8 | 40 | 33 | 39 | 112 |
| 6,848 | 6,298 | 6,959 | 20,105 | 40.2 | 38.2 | 40.9 | 39.8 | 61 | 54 | 60 | 175 |
| 3,551 | 3,045 | 3,484 | 10,080 | 32.4 | 28.8 | 31.8 | 31.0 | 45 | 36 | 50 | 131 |
| 1,567 | 1,630 | 1,699 | 4,896 | 23.5 | 25.3 | 25.5 | 24.8 | 14 | 15 | 16 | 44 |
| 7,457 | 7,519 | 9,932 | 24,908 | 25.2 | 26.2 | 33.5 | 28.3 | 69 | 72 | 107 | 248 |
| 5,555 | 4,924 | 5,808 | 16,287 | 17.1 | 15.6 | 17.9 | 16.9 | 56 | 43 | 55 | 154 |
| 91,387 | 82,981 | 99,742 | 274,110 | 37.4 | 35.1 | 40.9 | 37.8 | 870 | 745 | 991 | 2,605 |
| 2,100 | 2,044 | 2,311 | 6,455 | 40.8 | 41.0 | 44.9 | 42.3 | 25 | 26 | 28 | 79 |
| 537 | 473 | 545 | 1,555 | 10.9 | 9.9 | 11.1 | 10.6 | 5 | 4 | 5 | 13 |
| 8,058 | 7,310 | 7,064 | 22,432 | 64.2 | 60.2 | 56.3 | 60.2 | 78 | 71 | 75 | 225 |
| 1,945 | 1,496 | 1,302 | 4,743 | 22.4 | 17.8 | 15.0 | 18.4 | 21 | 15 | 14 | 51 |
| 9,322 | 8,953 | 9,242 | 27,517 | 20.3 | 20.1 | 20.1 | 20.2 | 80 | 71 | 82 | 232 |
| 21,962 | 20,276 | 20,464 | 62,702 | 28.4 | 27.1 | 26.5 | 27.3 | 210 | 187 | 204 | 600 |
| 1,018 | 758 | 737 | 2,513 | 7.1 | 5.5 | 5.1 | 5.9 | 10 | 5 | 6 | 20 |
| 2,224 | 2,225 | 2,184 | 6,633 | 42.5 | 43.9 | 41.7 | 42.7 | 20 | 20 | 19 | 59 |
| 1,709 | 1,448 | 1,348 | 4,505 | 18.7 | 16.4 | 14.7 | 16.6 | 12 | 11 | 10 | 33 |
| 4,951 | 4,431 | 4,269 | 13,651 | 17.2 | 16.0 | 14.9 | 16.0 | 41 | 36 | 35 | 112 |

TABLE 11 — CARAVAN PARKS: STATISTICAL DIVISIONS AND SELECTED SUBDIVISIONS

| Statistical Divisions and Selected Subdivisions and Statistical Local Areas | Capacity | | | | | Total | Sites occupied by long-term guests | Other sites permanently reserved | Employment (persons) |
|---|----------------|--------------|---------------------|-----------------|---------------------|--------------|------------------------------------|----------------------------------|----------------------|
| | Establishments | On-site vans | Other powered sites | Unpowered sites | Cabins, flats, etc. | | | | |
| Banana (S) | 8 | 105 | 245 | 124 | 17 | 491 | 78 | 1 | 25 |
| Calliope (S) — Parts A and B | 9 | 58 | 514 | 217 | 26 | 815 | 195 | 20 | 28 |
| Emerald (S) | 14 | 108 | 503 | 222 | 78 | 911 | 185 | 2 | 51 |
| Gladstone (C) | 7 | 79 | 286 | 49 | 40 | 454 | 252 | | 23 |
| Livingstone (S) | 11 | 47 | 485 | 281 | 71 | 884 | 194 | 29 | 38 |
| Rockhampton (C) | 7 | 108 | 552 | 139 | 134 | 933 | 260 | | 52 |
| Balance | 15 | 97 | 482 | 155 | 20 | 754 | 171 | 8 | 38 |
| <i>Fitzroy (SD)</i> | <i>71</i> | <i>602</i> | <i>3,067</i> | <i>1,187</i> | <i>386</i> | <i>5,242</i> | <i>1,335</i> | <i>60</i> | <i>255</i> |
| <i>Central-West (SD)</i> | <i>10</i> | <i>53</i> | <i>304</i> | <i>411</i> | <i>42</i> | <i>810</i> | <i>23</i> | <i>4</i> | <i>21</i> |
| Broadsound (S) | 3 | 9 | 171 | 36 | 6 | 222 | 25 | 3 | 5 |
| Mirani (S) | 4 | 15 | 103 | 50 | 3 | 171 | 36 | 1 | 8 |
| Pioneer (S) — Parts A and B | 14 | 157 | 747 | 202 | 88 | 1,194 | 359 | 6 | 48 |
| Sarina (S) | 7 | 42 | 198 | 61 | 13 | 314 | 74 | 1 | 16 |
| Whitsunday (S) | 11 | 101 | 482 | 267 | 96 | 946 | 131 | 6 | 43 |
| Balance | 6 | 35 | 477 | 80 | 44 | 636 | 179 | | 21 |
| <i>Mackay (SD)</i> | <i>45</i> | <i>359</i> | <i>2,178</i> | <i>696</i> | <i>250</i> | <i>3,483</i> | <i>804</i> | <i>17</i> | <i>141</i> |
| Bowen (S) | 11 | 133 | 534 | 158 | 19 | 844 | 143 | 4 | 33 |
| Burdekin (S) | 7 | 28 | 236 | 127 | 29 | 420 | 99 | — | 19 |
| Charters Towers (C) | 3 | 22 | 102 | 54 | 25 | 203 | 66 | 7 | 12 |
| Dalrymple (S) | 3 | 9 | 57 | 45 | 12 | 123 | 6 | | 7 |
| Hinchinbrook (S) | 6 | 25 | 268 | 115 | 20 | 428 | 26 | 6 | 23 |
| Thuringowa (C) — Parts A and B | 4 | 19 | 207 | 79 | 10 | 315 | 128 | 1 | 12 |
| Townsville City (SSD) | 10 | 148 | 740 | 197 | 93 | 1,178 | 458 | 1 | 59 |
| <i>Northern (SD)</i> | <i>44</i> | <i>384</i> | <i>2,144</i> | <i>775</i> | <i>208</i> | <i>3,511</i> | <i>926</i> | <i>19</i> | <i>165</i> |
| Atherton (S) and Eacham (S) | 9 | 41 | 310 | 351 | 66 | 768 | 121 | 24 | 26 |
| Cairns (C) | 4 | 59 | 379 | 131 | 87 | 656 | 270 | 2 | 27 |
| Cardwell (S) | 12 | 96 | 433 | 243 | 73 | 845 | 100 | 8 | 49 |
| Douglas (S) | 11 | 55 | 544 | 223 | 69 | 891 | 111 | 2 | 44 |
| Etheridge (S) | 3 | 7 | 65 | 45 | 12 | 129 | | | 6 |
| Herberton (S) | 5 | 13 | 89 | 152 | 14 | 268 | 24 | — | 17 |
| Johnstone (S) | 13 | 81 | 461 | 291 | 45 | 878 | 122 | 2 | 35 |
| Mareeba (S) | 9 | 75 | 223 | 144 | 38 | 480 | 88 | 17 | 22 |
| Mulgrave (S) — Parts A and B | 19 | 242 | 949 | 304 | 200 | 1,695 | 473 | 32 | 82 |
| Balance | 7 | 29 | 187 | 480 | 14 | 710 | 46 | 1 | 21 |
| <i>Far North (SD)</i> | <i>92</i> | <i>698</i> | <i>3,640</i> | <i>2,364</i> | <i>618</i> | <i>7,320</i> | <i>1,355</i> | <i>88</i> | <i>329</i> |
| Carpentaria (S) | 3 | 10 | 140 | 62 | 26 | 238 | 12 | — | 5 |
| Mount Isa (C) | 9 | 61 | 593 | 134 | 18 | 806 | 330 | — | 26 |
| Balance | 12 | 29 | 304 | 339 | 13 | 685 | 31 | — | 28 |
| <i>North-West (SD)</i> | <i>24</i> | <i>100</i> | <i>1,037</i> | <i>535</i> | <i>57</i> | <i>1,729</i> | <i>373</i> | <i>—</i> | <i>59</i> |
| <i>Queensland</i> | | | | | | | | | |
| Short-term parks | 231 | 1,080 | 10,792 | 8,390 | 1,207 | 21,469 | 1,752 | 684 | 811 |
| Long-term parks | 398 | 4,728 | 21,835 | 5,413 | 2,237 | 34,213 | 14,687 | 502 | 1,372 |
| Total | 629 | 5,808 | 32,627 | 13,803 | 3,444 | 55,682 | 16,439 | 1,186 | 2,183 |
| Albert (S) (a) | 13 | 267 | 1,159 | 152 | 35 | 1,613 | 978 | 12 | 64 |
| Beaudesert (S) (a) | 4 | 27 | 130 | 132 | 21 | 310 | 71 | — | 25 |
| Caboolture (S) (a) | 13 | 187 | 1,216 | 68 | 49 | 1,520 | 841 | 142 | 50 |
| Sunshine Coast Statistical District (b) | 37 | 229 | 2,785 | 1,060 | 304 | 4,378 | 1,109 | 252 | 183 |

(a) Albert, Beaudesert and Caboolture Shires straddle the boundary line between Brisbane and Moreton Statistical Divisions. (b) Sunshine Coast Statistical District comprises the more urban coastal portions of Caloundra City and Maroochy and Noosa Shires.

AND STATISTICAL LOCAL AREAS, QUEENSLAND, DECEMBER QUARTER 1993- continued

| <i>Site nights occupied</i> | | | | <i>Site occupancy rates (per cent)</i> | | | | <i>Takings from accommodation (\$ '000)</i> | | | |
|-----------------------------|---------------|---------------|--------------------|--|-------------|-------------|---------------------|---|-------------|-------------|---------------------|
| <i>Oct.</i> | <i>Nov.</i> | <i>Dec.</i> | <i>Dec qtr</i> | <i>Oct</i> | <i>Nov.</i> | <i>Dec.</i> | <i>Dec. qtr</i> | <i>Oct.</i> | <i>Nov.</i> | <i>Dec.</i> | <i>Dec. qtr</i> |
| 3,274 | 3,244 | 2,991 | 9,509 | 21.5 | 22.0 | 19.7 | 21.1 | 28 | 30 | 31 | 89 |
| 7,420 | 7,576 | 8,947 | 23,943 | 29.4 | 31.0 | 35.4 | 31.9 | 62 | 67 | 87 | 217 |
| 10,470 | 9,708 | 9,410 | 29,588 | 37.1 | 35.5 | 33.3 | 35.3 | 94 | 84 | 97 | 275 |
| 10,326 | 10,240 | 10,119 | 30,685 | 73.4 | 75.2 | 71.9 | 73.5 | 96 | 90 | 94 | 281 |
| 11,272 | 9,545 | 11,559 | 32,376 | 41.1 | 36.0 | 42.2 | 39.8 | 119 | 101 | 124 | 344 |
| 12,208 | 10,530 | 11,226 | 33,964 | 42.2 | 37.6 | 38.8 | 39.6 | 149 | 133 | 149 | 431 |
| 6,271 | 6,292 | 6,017 | 18,580 | 26.8 | 27.8 | 25.7 | 26.8 | 50 | 47 | 45 | 142 |
| <i>61,241</i> | <i>57,135</i> | <i>60,269</i> | <i>178,645</i> | <i>37.7</i> | <i>36.3</i> | <i>37.1</i> | <i>37.0</i> | <i>598</i> | <i>553</i> | <i>626</i> | <i>1,778</i> |
| <i>2,429</i> | <i>1,661</i> | <i>1,737</i> | <i>5,827</i> | <i>9.7</i> | <i>6.8</i> | <i>6.9</i> | <i>7.8</i> | <i>38</i> | <i>25</i> | <i>29</i> | <i>91</i> |
| 1,584 | 1,617 | 1,530 | 4,731 | 23.0 | 24.3 | 22.2 | 23.2 | 14 | 14 | 13 | 41 |
| 1,703 | 1,563 | 1,437 | 4,703 | 32.1 | 30.5 | 27.1 | 29.9 | 6 | 6 | 6 | 19 |
| 15,150 | 13,402 | 14,120 | 42,672 | 40.9 | 37.4 | 38.1 | 38.8 | 162 | 138 | 150 | 450 |
| 3,115 | 2,867 | 2,985 | 8,967 | 32.0 | 30.4 | 30.7 | 31.0 | 24 | 22 | 24 | 69 |
| 9,786 | 8,268 | 10,330 | 28,384 | 33.4 | 29.1 | 35.2 | 32.6 | 141 | 122 | 147 | 409 |
| 7,580 | 7,101 | 7,282 | 21,963 | 38.4 | 37.2 | 36.9 | 37.5 | 81 | 75 | 72 | 228 |
| <i>38,918</i> | <i>34,818</i> | <i>37,684</i> | <i>111,420</i> | <i>36.0</i> | <i>33.3</i> | <i>34.9</i> | <i>34.8</i> | <i>428</i> | <i>378</i> | <i>412</i> | <i>1,218</i> |
| 10,349 | 7,911 | 6,201 | 24,461 | 39.6 | 31.2 | 23.7 | 31.5 | 107 | 82 | 69 | 258 |
| 4,377 | 4,343 | 3,962 | 12,682 | 33.6 | 34.5 | 30.4 | 32.8 | 40 | 34 | 31 | 106 |
| 2,566 | 2,557 | 2,768 | 7,891 | 40.8 | 42.0 | 44.0 | 42.3 | 31 | 31 | 29 | 91 |
| 335 | 304 | 278 | 917 | 8.8 | 8.2 | 7.3 | 8.1 | 3 | 3 | 2 | 8 |
| 2,608 | 2,147 | 2,647 | 7,402 | 19.7 | 16.7 | 20.0 | 18.8 | 24 | 19 | 24 | 68 |
| 5,065 | 5,279 | 5,448 | 15,792 | 51.9 | 55.9 | 55.8 | 54.5 | 36 | 37 | 39 | 111 |
| 20,058 | 17,920 | 18,214 | 56,192 | 54.9 | 50.7 | 49.9 | 51.8 | 236 | 210 | 222 | 668 |
| <i>45,358</i> | <i>40,461</i> | <i>39,518</i> | <i>125,337</i> | <i>41.7</i> | <i>38.4</i> | <i>36.3</i> | <i>38.8</i> | <i>477</i> | <i>416</i> | <i>417</i> | <i>1,309</i> |
| 6,248 | 5,595 | 5,965 | 17,808 | 26.2 | 24.3 | 25.1 | 25.2 | 62 | 55 | 63 | 180 |
| 14,083 | 13,188 | 13,447 | 40,718 | 69.3 | 67.0 | 66.1 | 67.5 | 181 | 169 | 174 | 523 |
| 7,643 | 6,331 | 6,037 | 20,011 | 29.2 | 25.0 | 23.0 | 25.7 | 94 | 73 | 75 | 242 |
| 11,907 | 8,467 | 7,810 | 28,184 | 43.1 | 31.7 | 28.3 | 34.4 | 161 | 106 | 97 | 364 |
| 177 | 72 | 53 | 302 | 4.4 | 1.9 | 1.3 | 2.5 | 2 | 1 | 1 | 4 |
| 977 | 899 | 874 | 2,750 | 11.8 | 11.2 | 10.5 | 11.2 | 9 | 8 | 8 | 26 |
| 8,461 | 7,274 | 6,112 | 21,847 | 31.1 | 27.6 | 22.5 | 27.0 | 80 | 69 | 60 | 209 |
| 4,983 | 4,697 | 4,731 | 14,411 | 33.5 | 32.6 | 31.8 | 32.6 | 53 | 51 | 51 | 154 |
| 24,778 | 22,164 | 23,245 | 70,187 | 47.2 | 43.6 | 44.2 | 45.0 | 334 | 282 | 307 | 923 |
| 3,691 | 2,611 | 2,372 | 8,674 | 16.8 | 12.3 | 10.8 | 13.3 | 32 | 24 | 22 | 78 |
| <i>82,948</i> | <i>71,298</i> | <i>70,646</i> | <i>224,892</i> | <i>36.6</i> | <i>32.5</i> | <i>31.1</i> | <i>33.4</i> | <i>1,008</i> | <i>837</i> | <i>858</i> | <i>2,703</i> |
| 1,521 | 1,188 | 931 | 3,640 | 20.6 | 16.6 | 12.6 | 16.6 | 15 | 11 | 9 | 35 |
| 12,802 | 11,880 | 11,330 | 36,012 | 51.2 | 49.1 | 45.3 | 48.6 | 132 | 114 | 118 | 364 |
| 2,475 | 1,763 | 1,389 | 5,627 | 11.7 | 8.6 | 6.5 | 8.9 | 28 | 22 | 17 | 67 |
| <i>16,798</i> | <i>14,831</i> | <i>13,650</i> | <i>45,279</i> | <i>31.3</i> | <i>28.6</i> | <i>25.5</i> | <i>28.5</i> | <i>175</i> | <i>148</i> | <i>143</i> | <i>466</i> |
| 192,811 | 160,706 | 211,836 | 565,353 | 29.1 | 25.0 | 31.8 | 28.7 | 2,354 | 2,045 | 2,553 | 6,953 |
| 563,172 | 535,530 | 560,429 | 1,659,131 | 53.1 | 52.2 | 52.8 | 52.7 | 5,381 | 4,986 | 5,611 | 15,979 |
| 755,983 | 696,236 | 772,263 | 2,224,484 | 43.9 | 41.7 | 44.7 | 43.4 | 7,735 | 7,031 | 8,165 | 22,931 |
| 33,706 | 31,975 | 34,079 | 99,760 | 67.4 | 66.1 | 68.2 | 67.2 | 334 | 311 | 340 | 985 |
| 3,783 | 3,171 | 4,040 | 10,994 | 39.4 | 34.1 | 42.0 | 38.5 | 39 | 37 | 46 | 122 |
| 33,954 | 31,732 | 34,506 | 100,192 | 72.1 | 69.6 | 73.2 | 71.6 | 309 | 294 | 363 | 967 |
| 70,167 | 64,845 | 85,558 | 220,570 | 51.7 | 49.4 | 63.0 | 54.8 | 793 | 831 | 1,039 | 2,663 |

TABLE 12 — VISITOR HOSTELS BY STATISTICAL DIVISION, QUEENSLAND

| <i>Particulars</i> | <i>Brisbane (SD)</i> | <i>Moreton (SD)</i> | <i>Wide Bay- Burnett (SD)</i> | <i>Mackay (SD)</i> | <i>Northern (SD)</i> | <i>Far North (SD)</i> | <i>Balance of State</i> | <i>Queensland</i> |
|--|--------------------------|-------------------------|-----------------------------------|------------------------|--------------------------|---------------------------|-----------------------------|-------------------|
| ESTABLISHMENTS, CAPACITY AND EMPLOYMENT | | | | | | | | |
| <i>December quarter 1992—</i> | | | | | | | | |
| Establishments | 17 | 18 | 8 | 13 | 18 | 38 | 9 | 121 |
| Bed spaces | 757 | 933 | 433 | 834 | 1,341 | 3,230 | 334 | 7,862 |
| Employment (persons) | 44 | 50 | 30 | 96 | 81 | 232 | 16 | 549 |
| <i>December quarter 1993—</i> | | | | | | | | |
| Establishments | 14 | 18 | 8 | 13 | 17 | 36 | 12 | 118 |
| Bed spaces | 655 | 1,076 | 387 | 878 | 1,289 | 3,099 | 479 | 7,863 |
| Employment (persons) | 37 | 67 | 31 | 89 | 80 | 215 | 24 | 543 |
| GUEST NIGHTS | | | | | | | | |
| <i>December quarter 1992</i> | <i>29,992</i> | <i>47,676</i> | <i>27,260</i> | <i>42,450</i> | <i>61,543</i> | <i>132,716</i> | <i>12,370</i> | <i>354,007</i> |
| <i>1993—</i> | | | | | | | | |
| October | 10,349 | 13,945 | 8,315 | 12,766 | 16,905 | 43,377 | 7,094 | 112,751 |
| November | 10,669 | 14,542 | 8,503 | 13,972 | 15,908 | 40,161 | 6,873 | 110,628 |
| December | 10,611 | 21,067 | 8,612 | 15,851 | 14,009 | 38,660 | 7,045 | 115,855 |
| <i>December quarter 1993</i> | <i>31,629</i> | <i>49,554</i> | <i>25,430</i> | <i>42,589</i> | <i>46,822</i> | <i>122,198</i> | <i>21,012</i> | <i>339,234</i> |
| BED OCCUPANCY RATES (per cent) | | | | | | | | |
| <i>December quarter 1992</i> | <i>43.1</i> | <i>55.5</i> | <i>68.4</i> | <i>55.9</i> | <i>49.9</i> | <i>44.7</i> | <i>40.3</i> | <i>49.0</i> |
| <i>1993—</i> | | | | | | | | |
| October | 53.6 | 41.8 | 69.3 | 46.9 | 42.3 | 45.2 | 47.8 | 46.4 |
| November | 57.0 | 45.0 | 73.2 | 53.0 | 41.1 | 43.2 | 47.8 | 47.1 |
| December | 54.9 | 63.2 | 71.8 | 58.2 | 35.1 | 40.2 | 47.4 | 47.7 |
| <i>December quarter 1993</i> | <i>55.2</i> | <i>50.1</i> | <i>71.4</i> | <i>52.7</i> | <i>39.5</i> | <i>42.9</i> | <i>47.7</i> | <i>47.1</i> |
| GUEST ARRIVALS | | | | | | | | |
| <i>December quarter 1992</i> | <i>10,162</i> | <i>17,365</i> | <i>9,338</i> | <i>15,398</i> | <i>24,932</i> | <i>43,108</i> | <i>6,386</i> | <i>126,689</i> |
| <i>1993—</i> | | | | | | | | |
| October | 2,963 | 5,431 | 2,870 | 5,420 | 6,467 | 14,576 | 3,084 | 40,811 |
| November | 3,242 | 5,672 | 3,291 | 5,688 | 6,219 | 13,563 | 3,272 | 40,947 |
| December | 3,472 | 7,183 | 3,535 | 6,580 | 5,695 | 13,007 | 3,369 | 42,841 |
| <i>December quarter 1993</i> | <i>9,677</i> | <i>18,286</i> | <i>9,696</i> | <i>17,688</i> | <i>18,381</i> | <i>41,146</i> | <i>9,725</i> | <i>124,599</i> |
| AVERAGE LENGTH OF STAY (days) | | | | | | | | |
| <i>December quarter 1992</i> | <i>3.0</i> | <i>2.7</i> | <i>2.9</i> | <i>2.8</i> | <i>2.5</i> | <i>3.1</i> | <i>1.9</i> | <i>2.8</i> |
| <i>1993—</i> | | | | | | | | |
| October | 3.5 | 2.6 | 2.9 | 2.4 | 2.6 | 3.0 | 2.3 | 2.8 |
| November | 3.3 | 2.6 | 2.6 | 2.5 | 2.6 | 3.0 | 2.1 | 2.7 |
| December | 3.1 | 2.9 | 2.4 | 2.4 | 2.5 | 3.0 | 2.1 | 2.7 |
| <i>December quarter 1993</i> | <i>3.3</i> | <i>2.7</i> | <i>2.6</i> | <i>2.4</i> | <i>2.5</i> | <i>3.0</i> | <i>2.2</i> | <i>2.7</i> |
| TAKINGS FROM ACCOMMODATION (\$'000) | | | | | | | | |
| <i>December quarter 1992</i> | <i>355</i> | <i>568</i> | <i>303</i> | <i>437</i> | <i>632</i> | <i>1,511</i> | <i>138</i> | <i>3,945</i> |
| <i>1993—</i> | | | | | | | | |
| October | 118 | 160 | 79 | 143 | 156 | 503 | 77 | 1,236 |
| November | 128 | 172 | 82 | 157 | 149 | 464 | 81 | 1,234 |
| December | 131 | 257 | 82 | 177 | 131 | 455 | 79 | 1,311 |
| <i>December quarter 1993</i> | <i>377</i> | <i>588</i> | <i>243</i> | <i>478</i> | <i>436</i> | <i>1,423</i> | <i>237</i> | <i>3,782</i> |

EXPLANATORY NOTES

- INTRODUCTION** **1** This publication contains data for Queensland from a quarterly survey of tourist accommodation establishments. The period covered by the latest survey is the 3 months ended 31 December 1993.
- SCOPE** **2** Tourist accommodation establishments currently included in the survey comprise two groups:
- Establishments which provide predominantly short-term accommodation (i.e. for periods of less than 2 months) to the general public. These include:
 - Hotels, motels and guest houses, with facilities* being hotels licensed to operate a public bar and motels, private hotels and guest houses, all of which provide a bath (or shower) and toilet in most guest rooms and have breakfast available for guests.
 - NOTE: From December quarter 1993, hotel, motel and guest house establishments with fewer than five rooms have been formally excluded from the scope of this statistical collection. This change in scope resulted in the exclusion of 21 establishments which in the September quarter 1993 Survey aggregates represented 1.9 per cent of hotel, motel and guest house establishments but accounted for only 0.2 per cent of accommodation capacity and less than 0.1 per cent of occupancy and takings.
 - Holiday flats, units and houses* (excluding establishments predominantly operated on a time share basis) which are operated by owners or managers who have sole letting rights to at least five flats, units or houses or by real estate agents for short-term letting. They are mainly self-contained in terms of cooking, bath (or shower) and toilet facilities and do not have breakfast available for guests. Data for holiday flats, units and houses include short-term owner occupation as well as paying guest occupation.
 - Visitor hostels* which provide accommodation to visitors on a bed basis (rather than by the room). This category does not include establishments providing charity type accommodation (e.g. Salvation Army hostels) nor hotels, motels and guest houses without in-room facilities which provide accommodation on a per room basis.
 - *Caravan parks* providing either predominantly short-term (i.e. for periods of less than 2 months) or predominantly long-term (i.e. for periods of 2 months or more) accommodation to the general public and which provide powered sites for caravans and toilet, shower and laundry facilities for guests.
- 3** Data collected and published for each type of establishment (other than holiday flats, units and houses) include both long-term and short-term guests at these establishments.
- 4** Establishments providing more than one type of accommodation (e.g. a motel with attached caravan park) are treated as two or more separate establishments. However, self-contained units, flats, cabins, etc. attached to hotels, motels or to caravan parks are included in the capacity for those establishments and not treated as separate holiday flat, unit or house establishments.
- DEFINITIONS**
- 5** *Number of establishments.* For hotels, motels and guest houses, caravan parks and visitor hostels, the number of establishments within the scope of the survey which operated for any part of the survey period, or which closed temporarily for the quarter for seasonal reasons.
- 6** *Number of letting entities.* For holiday flats, units and houses, the number of owners, managers or real estate agents within the scope of the survey who operated for any part of the survey period.
- 7** Capacity in terms of *Guest rooms, Bed spaces, Holiday units* or *Caravan park sites, etc.* is the maximum number available to accommodate paying guests during the survey period. Capacity closed temporarily for seasonal reasons is included.
- 8** *Bed spaces.* Three-quarter beds are counted as one bed space; double beds as two bed spaces. Cots are excluded.
- 9** *Total caravan park capacity* comprises *On-site vans, Other powered sites, Unpowered sites* and *Cabins, etc.*

EXPLANATORY NOTES *continued*

DEFINITIONS --*continued*

10 *Room nights available.* The number of guest rooms available multiplied by the number of days for which they were available during the survey period. Includes operating periods only for establishments closing (other than for seasonal reasons) or opening during the survey period.

11 Occupancy in terms of *Room nights*, *Unit nights* or *Site nights occupied* refers to the total number of nights each guest room, holiday unit or caravan park site, etc. was occupied during the survey period.

NOTE: From September quarter 1992, caravan park sites, etc. permanently reserved for 2 months or more at the end of the survey period but only casually occupied by their tenants have been recorded continuously as *Site nights occupied* irrespective of whether the tenants of individual sites were in residence on any particular night. (See also paragraph 14 below). Previously, usage of these sites was recorded as *Site nights occupied* only when their tenants were in the park. Total site occupancy rates from September quarter 1992 are therefore not comparable with those from previous quarters.

12 Occupancy in terms of *Guest nights* refers to the total number of nights each paying guest stayed during the survey period.

13 *Sites occupied by long-term guests.* The total number of sites, etc. occupied at the end of the survey period by guests who have stayed continuously for 2 months or more.

14 *Other sites permanently reserved.* The total number of powered and unpowered sites, on-site vans and cabins, etc. continuously let for 2 months or more by the end of the survey period to tenants who occupy the sites only on a casual or sporadic basis. Separate data for this item are available only from September quarter 1992.

15 *Occupancy rates* represent occupancy expressed as a percentage of total capacity available during the survey period e.g.

Room occupancy rate (%) for the period =

$$\frac{\text{Room nights occupied}}{(\text{Guest rooms}) \times (\text{No. of days in the period})} \times 100$$

providing that, for establishments closing (other than for seasonal reasons) or opening during the period, the denominator of the above expression includes only operating periods.

16 *Guest arrivals.* The total number of paying guests counted only on the first night they stayed at the accommodation establishment.

17 *Unit lettings.* The total number of times a holiday flat, unit or house was occupied by a new tenant, counted only on the first night it was occupied by the new tenant.

18 *Average length of stay* is expressed in number of days and is calculated:

- for hotels, motels and guest houses and for visitor hostels, by dividing *Guest nights* by *Guest arrivals* and
- for holiday flats, units and houses, by dividing *Unit nights occupied* by *Unit lettings*.

19 *Takings from accommodation.* Revenue received from the provision of accommodation. Takings from meals are excluded. Takings from accommodation for each month generally represent the takings received during that month. Where payments are received in advance of, or after, the provision of accommodation to guests, the monthly figure for takings from accommodation may not necessarily bear a direct relationship to the number of guests accommodated during the month. Rental and storage fees paid to caravan parks for the keeping of private vans in parks are included in the takings of the month they are received.

20 *Star grading.* The grading of hotels and motels with facilities based on the classification system used by members of the Australian Automobile Association (AAA). The gradings are allocated according to a points system based on the amenities and facilities available to guests. Details of the grading scheme are contained in the RACV-RAASA members' publication *Accommodation Australia*, or the individual tour guides produced by members of the AAA. For the purpose of classifying establishments to a star grading in this publication, 'half' star gradings are ignored (e.g. a two and a half star grading has been shown as two star).

EXPLANATORY NOTES *continued*

- 21** *Employment.* The number of persons working at accommodation establishments at the end of the survey period (including working proprietors and those working on other than accommodation activities).
- AUSTRALIAN STANDARD GEOGRAPHICAL CLASSIFICATION** **22.** Statistics presented in this publication have been classified according to the Australian Standard Geographical Classification (ASGC), Edition 2.3. This classification incorporates a number of hierarchic structures of geographic areas. The appropriate spatial units of the main structure of the ASGC used in this publication are defined as follows.
- Statistical Local Areas (SLAs)* are the smallest types of spatial units in the ASGC for which tourist accommodation data are presented. They correspond either to legal local government areas (LGAs) as defined under the *Local Government Act 1936* or to suburbs in certain urban LGAs. Some LGAs are split into two or more parts, with each part forming a separate SLA. In all instances, LGA data can be derived by aggregating SLAs. The unincorporated area of Queensland also forms a SLA. In aggregate, SLAs cover the whole of the State without gaps or overlaps.
- Statistical Subdivisions (SSDs)* consist of one or more SLAs and form the intermediate size spatial unit for the presentation of regional data.
- Statistical Divisions (SDs)*, which consist of one or more SSDs, are designed to be relatively homogeneous regions characterised by identifiable social and economic units within the region, under the unifying influence of one or more major towns or cities. The Brisbane Statistical Division comprises the Cities of Brisbane, Ipswich, Logan and Redcliffe, the Shires of Pine Rivers and Redland and parts of the Shires of Albert, Beaudesert, Caboolture, and Moreton.
- Statistical districts* have been defined around selected urban areas to provide comparable statistics over a period of time. These districts, which are intended to contain the anticipated urban spread for at least 20 years, are generally defined as having a population of 25,000 or more and experiencing urban growth beyond the LGA boundaries.
- For more detailed information, refer to the ASGC (1216.0).
- UNPUBLISHED STATISTICS** **23** The ABS may make available on request certain unpublished tourist accommodation statistics. In particular, small geographical area and other tabulations are available for various accommodation types in a time series format. A charge may be made for this information.
- RELATED PUBLICATIONS** **24** Publications for Australia and each State and Territory are released by the respective offices of the ABS. Tourist accommodation statistics for past quarters are available on request.
- 25** Other ABS publications which may be of interest include:
- Directory of Tourism Statistics*, 1991 (1130.0) (irregular)
- Overseas Arrivals and Departures, Australia* (3401.0) (monthly)
- Tourist Accommodation, Australia* (8635.0) (quarterly)
- 26** Current publications produced by the ABS are listed in the *Catalogue of Publications and Products* (1101.0). The ABS also issues the *Publications Advice* (1105.0) on Tuesdays and Fridays which lists publications to be released in the next few days. Both the *Catalogue* and *Publications Advice* are available from any ABS office.
- SYMBOLS AND OTHER USAGES** n.p. not available for publication but included in totals where applicable
- r figure or series revised since previous issue
- .. not applicable
- nil or rounded to zero
- (C) City
- (S) Shire
- (T) Town
- 27** Where figures have been rounded, discrepancies may occur between totals and the sums of the component items.

313 Adelaide Street
BRISBANE Q 4000
28 March 1994

R. A. CROCKETT
Deputy Commonwealth Statistician

TOURIST ACCOMMODATION, QUEENSLAND: TIME SERIES STATISTICS AVAILABLE

| ***** | | | | | | |
|--|-----|----|----|---|-----|-------|
| Brisbane Statistical Division | HM | HU | CP | Darling Downs Statistical Division | HM | CP |
| Brisbane City (SSD) | HM | HU | CP | Chinchilla (S) | IIM | |
| Ascot | HM | | | Dalby (T) | HM | |
| Aspley | HM | | CP | Goondiwindi (T) | HM | CP |
| Brisbane City Core (a) | HM | HU | | Inglewood (S) | HM | CP |
| City - Inner | HM | | | Jondaryan (S) | HM | |
| City - Remainder | HM | | | Murilla (S) | HM | CP |
| Kangaroo Point | HM | | | Stanthorpe (S) | HM | CP |
| Spring Hill | HM | HU | | Taroom (S) | HM | |
| Brisbane City Core (a) | | | | Toowoomba (C) | HM | CP |
| -- establishments with more than 50 rooms | HM | | | Wambo (S) | | CP |
| Eight Mile Plains | | | CP | Warwick (C) | HM | CP |
| Hamilton | IIM | | | | | |
| Caboolture (S) Part A (b) | | | CP | South-West Statistical Division | HM | CP |
| Ipswich (C) | HM | | CP | Balonne (S) | HM | |
| Logan City (SSD) | HM | | CP | Murweh (S) | HM | CP |
| Redcliffe City (SSD) | HM | | CP | Roma (T) | HM | CP |
| Redland Shire (SSD) | HM | | CP | | | |
| North Stradbroke and Coochiemudlo Islands | | HU | | Fitzroy Statistical Division | HM | HU CP |
| | | | | Banana (S) | | CP |
| Moreton Statistical Division | HM | HU | CP | Banana (S), Fitzroy (S) and Mt Morgan (S) | HM | |
| Beaudesert (S) Part B (b) | | | CP | Bauhiniya (S) | HM | |
| Boonah (S) | IIM | | | Calliope (S) -- Parts A and B | IIM | CP |
| Caboolture (S) -- Part B (b) | | | CP | Duaringa (S) | HM | |
| Caloundra (C) Parts A and B | HM | HU | CP | Emerald (S) | HM | CP |
| Esk (S) | HM | | CP | Gladstone (C) | HM | CP |
| Gafron (S) | | | CP | Livingstone (S) | HM | CP |
| Gold Coast City (SSD) | HM | HU | CP | Rockhampton (C) | HM | CP |
| Biggera Waters | | HU | | | | |
| Bilinga | IIM | | | Central-West Statistical Division | IIM | CP |
| Broadbeach | | HU | | Barcardine (S) | HM | |
| Burleigh Heads | HM | HU | | Longreach (S) | HM | |
| Coolangatta | IIM | HU | | | | |
| Coombah | | | CP | Mackay Statistical Division | HM | HU CP |
| Currumbin | HM | HU | | Belyando (S) | HM | |
| Labrador | HM | HU | CP | Broadsound (S) | | CP |
| Main Beach--Broadwater | | HU | | Mackay (C) | IIM | |
| Mermaid Beach | HM | HU | | Mirani (S) | | CP |
| Miami | HM | HU | | Pioneer (S) -- Parts A and B | IIM | CP |
| Palm Beach | HM | HU | | Sarina (S) | HM | CP |
| Southport | HM | | | Whitsunday (S) | HM | HU CP |
| Surfers Paradise | HM | HU | | | | |
| Tugun | | HU | | Northern Statistical Division | HM | HU CP |
| Gold Coast City (SSD) by establishment size | | | | Bowen (S) | HM | CP |
| (number of rooms) | | | | Burdekin (S) | HM | CP |
| 1-9, 10, 15, 16, 25, 50, 51-100, 101 & over | HM | | | Charters Towers (C) | HM | CP |
| Maroochy (S) -- Parts A and B | HM | HU | CP | Dalrymple (S) | | CP |
| Noosa (S) -- Parts A and B | HM | HU | CP | Hinchinbrook (S) | HM | CP |
| Sunshine Coast Statistical District (c) | HM | HU | CP | Thuringowa (C) Parts A and B | | CP |
| | | | | Townsville City (SSD) | HM | HU CP |
| Wide Bay--Burnett Statistical Division | HM | HU | CP | City | HM | |
| Bundaberg (C) | HM | | CP | Hermit Park | HM | |
| Gooburnum (S) -- Parts A and B | | | CP | Magnetic Island | | HU |
| Gympie (C) | HM | | | North Ward--Castle Hill | HM | HU |
| Gympie (C) and Widgee (S) (now Cooloola (S)) | HM | | CP | Rosslea | HM | |
| Hervey Bay (C) | HM | HU | CP | | | |
| Isis (S) | HM | | CP | | | |
| Kingaroy (S) | HM | | | | | |
| Kolan (S) | HM | | | | | |
| Maryborough (C) | HM | | CP | | | |
| Miriam Vale (S) | HM | | CP | | | |
| Nanango (S) | HM | | CP | | | |
| Widgee (S) | IIM | | | | | |
| Woongarra (S) -- Parts A and B | HM | HU | CP | | | |
| | | | | | | |
| ***** | | | | | | |

TOURIST ACCOMMODATION, QUEENSLAND: TIME SERIES STATISTICS AVAILABLE—continued

| | | | | | |
|--|----|----|----|--|----|
| Far North Statistical Division | HM | HU | CP | Queensland regions by star grading | |
| Atherton (S) | HM | | | Brisbane City (SSD) | |
| Atherton (S), Cardwell (S), Douglas (S), Eacham (S), Johnstone (S) and Mulgrave (S) | HM | | | 1 2 and ungraded, 3, 4-5 | HM |
| Atherton (S) and Eacham (S) | HM | | CP | Brisbane Statistical Division | |
| Cairns (C) | HM | HU | CP | 1-2, 3, 4-5, Ungraded | HM |
| Cardwell (S) | HM | | CP | Gold Coast City (SSD) | |
| Cook (S) (excl. Weipa) | HM | | | 1-2, 3, 4-5, Ungraded | HM |
| Douglas (S) | HM | HU | CP | Sunshine Coast Statistical District (c) | |
| Eacham (S) | HM | | | 1 2, 3, 4 5, Ungraded | HM |
| Etheridge (S) | | | CP | Bundaberg (C), Hervey Bay (C), Isis (S), Maryborough (C) and Woongarra (S) | |
| Herberton (S) | HM | | CP | 1 2, 3 4, Ungraded | HM |
| Johnstone (S) | HM | | CP | Stanthorpe (S), Toowoomba (C) and Warwick (C) | |
| Mareeba (S) | HM | | CP | 1-2, 3-4, Ungraded | HM |
| Mulgrave (S) Parts A and B | HM | HU | CP | Calliope (S) and Gladstone (C) | |
| | | | | 1-2, 3-4 & Ungraded | HM |
| North West Statistical Division | HM | | CP | Livingstone (S) and Rockhampton (C) | |
| Carpentaria (S) | HM | | | 1-2, 3-4 & Ungraded | HM |
| Cloncurry (S) | HM | | | Mackay (C), Pioneer (S) and Whitsunday (S) | |
| Flinders (S) | HM | | | 1 2, 3 5, Ungraded | HM |
| Mount Isa (C) | HM | | CP | Townsville (C) | |
| | | | | 1-2 and ungraded, 3-5 | HM |
| Total Queensland | HM | HU | CP | Atherton (S), Cardwell (S), Douglas (S), Eacham (S), Johnstone (S) and Mulgrave (S) | |
| By establishment size (number of rooms) | | | | 1-2, 3, 4-5, Ungraded | HM |
| 1-9, 10-15, 16-25, 26-50, 51-100, 101 & over | HM | | | Cairns (C) | |
| By star grading | | | | 1-2, 3, 4-5, Ungraded | HM |
| 1, 2, 3, 4, 5, Ungraded | HM | | | | |
| Other geographic aggregations | | | | | |
| Albert (S) (b) | HM | | CP | | |
| Beaudesert (S) (b) | HM | | CP | | |
| Caboolture (S) (b) | HM | | CP | | |
| Great Barrier Reef islands (d) | HM | | | | |
| Pioneer (S) and Whitsunday (S) | HM | | | | |
| Balance | HM | | | | |

NOTE: Establishment type codes are used above to denote the following:



HM — Licensed hotels, motels and guest houses with facilities

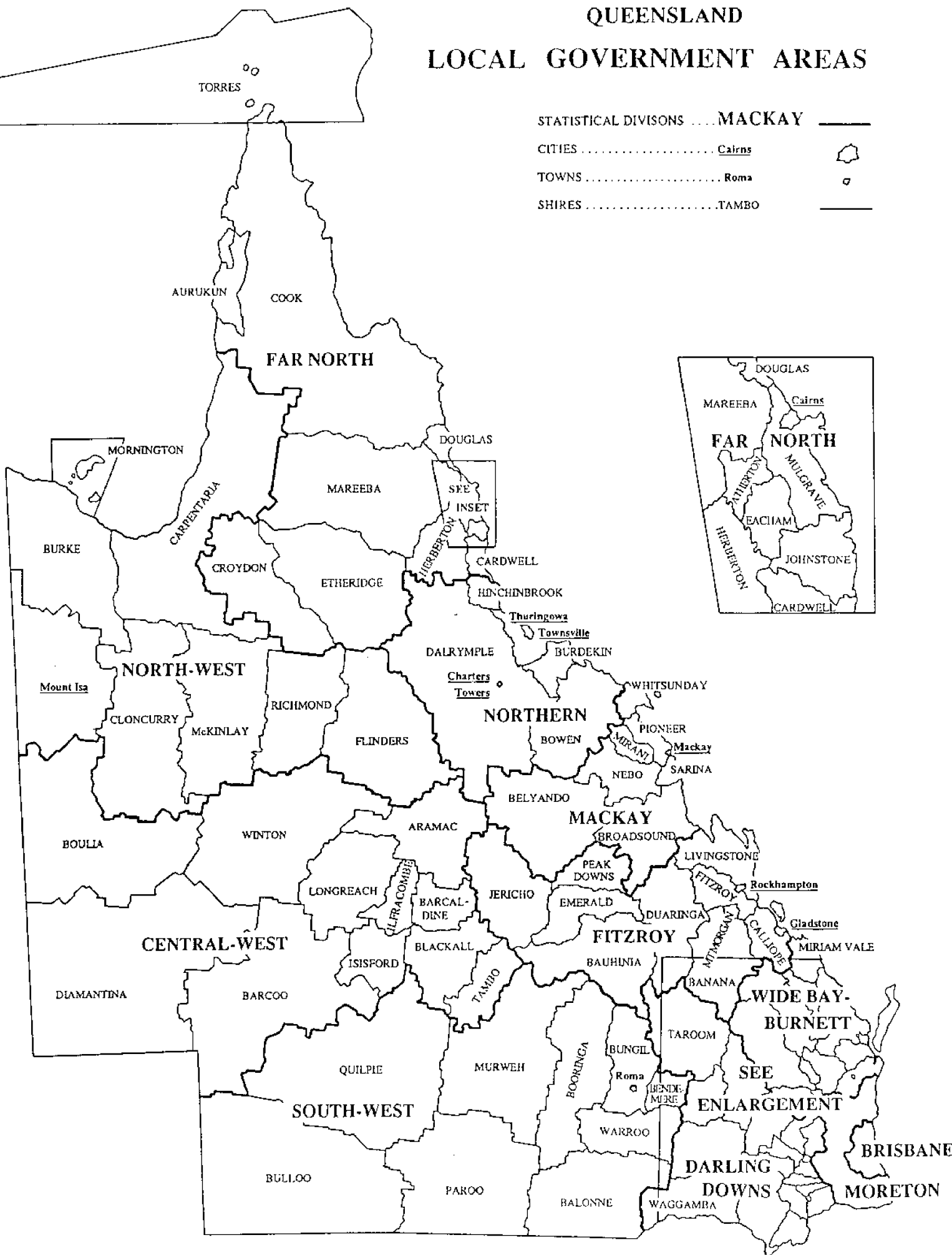
HU — Holiday flats, units and houses

CP — Caravan parks (total short-term and long-term)

(a) Brisbane City Core comprises the suburbs of Bowen Hills, City, Dutton Park, Fortitude Valley, Herston, Highgate Hill, Kangaroo Point, Kelvin Grove, Milton, New Farm, Newstead, Paddington, Red Hill, South Brisbane, Spring Hill, West End and Woolongabba. (b) Albert, Beaudesert, Caboolture and Moreton Shires straddle the boundary line between Brisbane and Moreton Statistical Divisions. (c) Sunshine Coast Statistical District comprises the more urban coastal portions of Caloundra City and Maroochy and Noosa Shires. (d) Great Barrier Reef island establishments are those on coastal islands from Lady Elliot in the south to Lizard in the north.

QUEENSLAND LOCAL GOVERNMENT AREAS

STATISTICAL DIVISIONS MACKAY _____
 CITIES Cairns 
 TOWNS Roma 
 SHIRES TAMBO _____



SOUTH-EASTERN QUEENSLAND

STATISTICAL DIVISIONS ... MORETON

CITIES Ipswich

TOWNS Dalby

SHIRES WONDAL



LOCAL GOVERNMENT AREAS





For more information ...

The ABS publishes a wide range of statistics and other information on Australia's economic and social conditions. Details of what is available in various publications and other products can be found in the *ABS Catalogue of Publications and Products* available at all ABS offices (see below for contact details).

Information Consultancy Service

Information tailored to special needs of clients can be obtained from the Information Consultancy Service available at ABS offices (see Information Inquiries below for contact details).

National Dial-a-Statistic Line

0055 26 400

This number gives you 24 hour access, 365 days a year for a range of statistics.

Electronic Data Services

A wide range of ABS data are available on electronic media. Selections of most frequently requested statistics are available, updated daily, on DISCOVERY (Key *656#). The ABS PC TELESTATS service delivers major economic indicator main features ready to download into personal computers on the day of release. The PC AUSSTATS service enables on-line access to a data base of thousands of up-to-date time series. Selected datasets are also available on diskette or CD-ROM. For more details on electronic data services available, contact Information Services in any of the ABS offices (see information Inquiries below for contact details).

Bookshops and Subscriptions

There are over 500 titles of various publications available from ABS bookshop in all ABS offices (see below Bookshop Sales for contact details). The ABS provides a subscription service through which nominated publications are provided by mail on a regular basis at no additional cost (telephone Publications Subscription Service toll free on 008 02 0608 Australia wide).

Sales and Inquiries

| Regional Offices | Information Inquiries | Bookshop Sales |
|-------------------------|------------------------------|-----------------------|
| SYDNEY (02) | 268 4611 | 268 4620 |
| MELBOURNE (03) | 615 7000 | 615 7829 |
| BRISBANE (07) | 222 6351 | 222 6350 |
| PERTH (09) | 323 5140 | 323 5307 |
| ADELAIDE (08) | 237 7100 | 237 7582 |
| HOBART (002) | 205 800 | 205 800 |
| CANBERRA (06) | 207 0315 | 207 0315 |
| DARWIN (089) | 432 111 | 432 111 |
| National Office | | |
| ACT (06) | 252 6007 | 008 020 608 |

Information Services, ABS, GPO Box 9817, Brisbane Q 4001



Tourist Accommodation, Queensland, December Quarter 1993

Catalogue No. 9033.3



2863530012930
ISSN 0725-394X

Recommended retail price: \$25.00